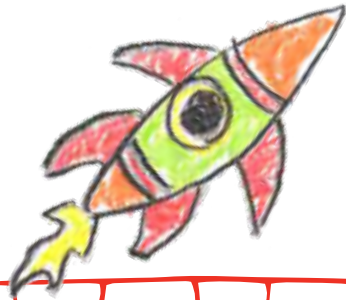


# Education Catalog

2024-25



“Excellent hands on activities and engaging manipulatives to build and develop creativity.”



# Unlock a World of Discovery at LICM



Step beyond the classroom and immerse your students in a vibrant world of learning and exploration with our unforgettable museum field trips! Connect with science, literature, history and culture in LICM's dynamic, hands-on environment.

## Why Chose a Museum Field Trip?

- **Support Educational Goals:** Our field trips and live theater performances align with educational standards and curriculum objectives, making them a valuable extension of classroom learning.
- **Experience Real-World Connections:** Give your students the chance to see their learning come to life. LICM exhibits are designed to spark interest and deepen understanding of your classroom lessons.
- **Inspire Creativity & a Love of Learning:** Museum field trips encourage your students to think creatively, test what they've learned through direct interactions and develop a passion for learning and exploration.

**Maximize Students Learning Experiences ...**  
**Save 30%!**

Our popular "Double Your Learning" option stretches field trip budgets while addressing the full spectrum of curriculum themes.



## Here's how it works:

Select **two** LICM programs during your visit day to maximize the value of your bus investment. Consider adding a live **theater** performance to your day **OR** add a second field trip **exploration** to create an unforgettable day for your students.



**TIP:** Create a day that covers all the educational bases by doubling up on experiential learning with our "Play & Wonder" field trip coupled with the stories of Ezra Jack Keats in the LICM Theater. Combine our "Explore & More" field trip with a production of "Interstellar Cinderella" for an out-

of-this-world day! These are just some of the popular combos available to your students with **"Double Your Learning!"**

**BONUS:** When you book the "Double Your Learning" option, your schedule will include a 30-minute lunch break. The **cafeteria usage fee is waived** for groups booking this option.

Fee: **\$22.50**/student; includes guided morning and afternoon programs and cafeteria usage.

"Educators were knowledgeable, effective, engaging and connected immediately with the students, particularly with students with alternate learning needs."

# Field Trips



Check out our LICM field trip Pinterest boards!

Watch the concepts you introduced in the classroom come to life as your students make real-world connections as they observe and experiment in our interactive exhibits.

All guided field trips are led by trained Museum Educators.

**LICM is a popular field trip destination--book early for preferred dates and times! (Ask about Cafeteria availability or a Museum Store visit when booking.)**

The Children's Museum offers reduced admission rates for all school visit participants. Built around specific themes, our guided field trips utilize selected exhibits highlighting key learning concepts. Exhibits cannot be substituted. The cost per student is **\$16**. (See chaperone policy on page 6)

**Guided field trips are available Tuesday through Friday; tour time choices are: 10-11:30 a.m. • Noon-1:30 p.m.**

## Play & Wonder—Nursery-Kindergarten

The educational value of play is immeasurable. Young children will naturally play in, and respond to, our developmentally appropriate galleries. Children, together with their chaperones, experience the benefits of tactile, socio-dramatic and scientific play.

**Exhibits:** TotSpot, Sandy Island, Sound Showers

**Workshop:** "Animal Adventures" - children explore and learn about our natural world through close up animal encounters.

"From the ease of registration to check in, to programs, we will definitely return next year!"

## Explore & More—Kindergarten-Grade 5

Children learn through hands-on experiences and use critical thinking skills to solve problems found in everyday life. Using newly acquired skills of inquiry, creativity and collaboration; students will explore multi-sensory experiences that extend classroom learning.

**Exhibits:** Bubbles, Your House, My House, Pattern Studio and Comings & Goings



## STEM to STEAM—Grades 1-6

Working together children will examine how science, technology, engineering, math AND art combine to shape our natural world and the built environment. Through active learning, students are encouraged to make predictions and discover the answers to questions using hands-on experiences.

**Exhibits:** Tool Box, KEVA, Feasts for Beasts, Communication Station

## Self-Guided Tour



Self-guided tours are available Tuesday-Friday for groups with a minimum of 10 children. Reservations must be made at least two weeks prior to the tour date and are based on availability. The cost for a self-guided tour is **\$17** per person (all children and adults).

You will receive confirmation of your reservation. Bring the confirmation with you on the day of your tour and be present at the Box Office to receive the group rate. All participants in a self-guided tour must be present to qualify for the discounted rate. Cafeteria reservations are not available to self-guided tour groups. Blackout dates may apply. Membership, coupons, guest passes, special offers, etc. are not valid for groups, school visits or self-guided tours.

# This Season in the LICM Theater

"It was entertaining and held the student's attention. We had a discussion about feelings after the show, too. It was a fabulous trip. Thank you!"

LICM Theater's School Performance season provides Our productions this season all highlight the themes of growth, persistence and resilience. The characters in the stories are presented with challenges that they overcome because they are open to learning and determined to succeed. With music, puppetry and dance, our shows engage and entertain, while exposing students to social emotional learning concepts such as self-awareness, self-management and responsible decision-making. All while having a wonderful time experiencing live theater!

All performances include talkbacks as part of the total theater experience. Education activity packets for each production are available for download from the LICM website to aid you and your students.



The cost per student is **\$16**. (See chaperone policy on page 6).

**Theater field trip arrival times are 10 a.m. and noon.** Performances and theater activities run 90 minutes in length.

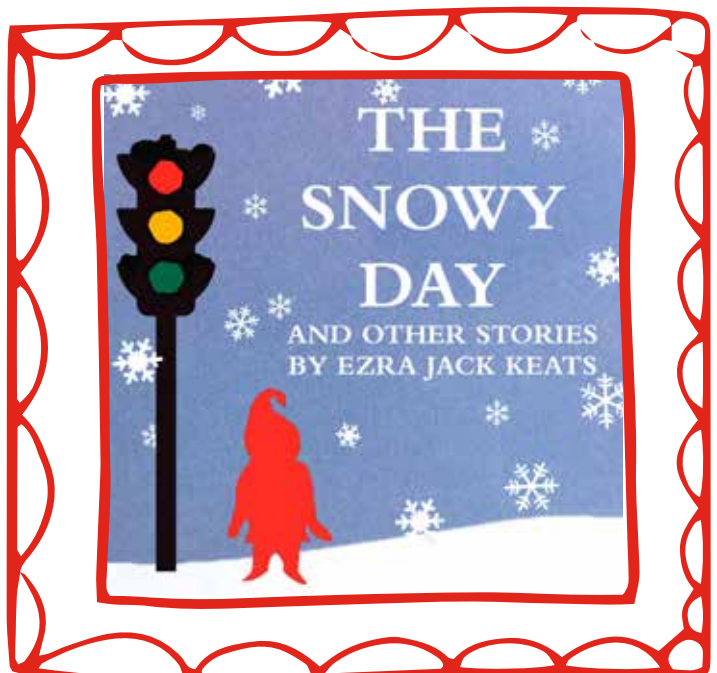
## The Snowy Day and Other Stories by Ezra Jack Keats –

**Pre-K to Grade 4**

By Jerome Hairston; Based on the stories by Ezra Jack Keats

**Available: December 2024**

Join us in the LICM Theater to experience the wonder of a fresh snowfall, the delight of whistling for the first time and the awe in finding a special treasure. In this childhood adventure, Ezra Jack Keats' books come to life, featuring live actors and shadow puppets telling the stories of *The Snowy Day*, *Goggles! Whistle for Willie* and *A Letter to Amy*.



*"Featuring both live action and shadow puppetry, Keats' sweet stories come to life with a nice mix of adventure, curiosity and empathy."*

—The Tennessean

# This Season in the LICM Theater

## Interstellar Cinderella – Grades 1-4

Music and Lyrics by Laurie Berkner;  
Book by Barbara Zinn Krieger

From the book “Interstellar Cinderella” by Deborah Underwood; published by Chronicle Books LLC © 2015. Originally produced by New York City Children’s Theater, 2017

**Available: February-March 2025**



Illustrated  
by Meg Hunt

It is 3017, the future retelling of one of the world’s most beloved stories through musical theater, Cinderella. Cinderella is a space engineer looking to revolutionize space travel. When the prince holds a space parade, Cinderella saves the parade by helping fix the prince’s spaceship. Cinderella knows it’s the perfect opportunity to show the Prince her new hyper warp speed engine. But first, she’ll have to keep her evil stepmother from throwing a wrench in her plans!

**Tip:** Combine this production with LICM’s Explore & More field trip and explore the “Moon to Mars” traveling exhibit.

*INTERSTELLAR CINDERELLA is presented through special arrangement with, and all authorized performance materials are supplied by TYA Show Rights, c/o New York City Children’s Theater, 340 E. 46th Street, New York, NY 10017. (212) 573-8791. www.tyashowrights.com*

## Elephant and Piggie’s We are in a Play!

– Pre-K to Grade 3

Book and Lyrics by Mo Willems; Music by Deborah Wicks La Puma

**Available: April - June 2025**

Back by popular demand on the LICM stage! Enjoy a musical adventure, ripped from the pages of Mo Willems’ beloved award-winning, best-selling children’s books. Willems’ classic characters Elephant and Piggie storm the stage in a rollicking musical romp filled with plenty of pachydermal peril and swiney suspense perfect for young audiences. Carefully cautious Gerald and spirited playful Piggie share a day where anything is possible in an imaginative exploration of the meaning of friendship. Together with nutty backup singers, The Squirrelles, our comedic duo even gets the audience involved in the action.



*This production is presented through a special arrangement with Music Theater International (MTI).*

“This show has everything – a great story, a great lesson, excellent acting, singing and dancing...you really need to go see it. I loved the book, too!”

– Kids’ News NYC

# Schedule your visit



LICM makes scheduling your visit simple: Review our **FAQs** at [www.licm.org/schoolsfaq](http://www.licm.org/schoolsfaq) and then complete the online reservation form. We'll take it from there! (Tip: Completing the online form speeds up the reservation process.)

Alternately, you can call the reservation office at (516) 224-5869, Monday through Friday between 9 a.m. and 5 p.m. Remember: Popular times fill up quickly.

Please advise the Museum in advance if your group has any special needs so that we may assign staff accordingly. Guided visits are offered Tuesday–Friday from 10–11:30 a.m. and from noon–1:30 p.m. Tour times cannot be adjusted.

## Cost

The Children's Museum offers reduced admission rates for all school visit participants. The cost per student is \$16 for a guided tour. (See chaperone policy below.)

**Give Your Students Extra Museum time!  
Ask the Reservation Manager about adding more time for self-guided exploration.  
Additional fees will apply.**

A 50% non-refundable deposit (or BOCES or School District purchase order) and "Signature Page" (sent to you when you register) is required 30 days before your visit to hold your reservation. LICM reserves the right to cancel a reservation if required materials are not received on time. Outstanding balances must be paid upon arrival on the day of your visit (unless the purchase order has been received). If at least four weeks' notice of cancellation is given, reasonable efforts will be made to reschedule your class for another date. No refunds are issued for school trips.

**All Long Island Children's Museum's school visits may be paid for with Nassau County BOCES Arts in Education and Suffolk County BOCES funds. LICM is also an approved vendor with the New York City Board of Education.**

## Guided Tour Group Size

The minimum number of students per class is 10 children; maximum is 25.

## Chaperone Policy

Guided field trip/theater programs:

1. One adult chaperone is required for every three kindergarten and younger students
2. One adult chaperone is required for every five children in grades 1–6. These chaperones are admitted free and must stay with their group. (Adult chaperones include teachers, classroom aides, etc.) Additional adults that exceed the ratios mentioned above will be charged at the group rate (**\$16** each or **\$22.50** for Double Your Learning). A limit of five additional adults per date is permitted for each organization.
3. School nurses and 1:1 aides are not included in the chaperone ratio identified above and are not charged for admission

## Galleries

If a designated gallery cannot be made available, LICM reserves the right to provide a substitute exhibit.

## Lunch Time at LICM

While you're feeding their minds during an LICM field trip, schedule time to feed their tummies! If your group wishes to schedule lunchtime at LICM, a reservation request must be made in advance. (The LICM Cafeteria offers vending service only.) The cafeteria is available on a limited basis and by reservation only for groups bringing lunches. A usage fee of **\$55** (for up to 50 individuals) will apply. An additional fee of **\$35** is applied for groups between 50–100 individuals.



# Outreaches

## —Museum On The Go!

Can't get to the Long Island Children's Museum? Let the museum come to you!

Led by Museum Educators, all workshops embody the museum's philosophy that children learn best by seeing, touching, doing, and having fun.

Workshops last approximately one hour and are offered for groups of 25-30 children and their adult chaperones.

**Ask about discounts available for multiple bookings when you call.**

LICM Outreach programs are registered with BOCES. Call (516) 224-5847 or e-mail outreach@licm.org to book an LICM Outreach. (Mileage fees apply for locations farther than 30 minutes away.)

### **Bubble POP! — Nursery - Grade 5**

Become a bubble scientist and learn more about the unique physical properties of bubbles as you experiment at our three interactive stations. Experiment making bubbles and take home your own bubble print.

**Fee: \$350**



### **All Abuzz — Pre-K-Grade 3**

Junior entomologists will meet a hissing cockroach and discover insects that camouflage. They will learn what makes an animal an insect and the different body parts they have. Students will create their own bugs. Children will be provided with

a field guide page about their bug that can be done after the program.

**Fees: \$300**

### **Build It — Pre-K - Grade 3**

How did the Leaning Tower of Pisa get its name? Explore the scientific forces behind structures such as bridges and towers as you apply building design concepts to construct a freestanding structure out of Magic Noodles and toothpicks.

**Fee: \$300**



### **Catch Me if You Can! — Kindergarten through Grade 5**

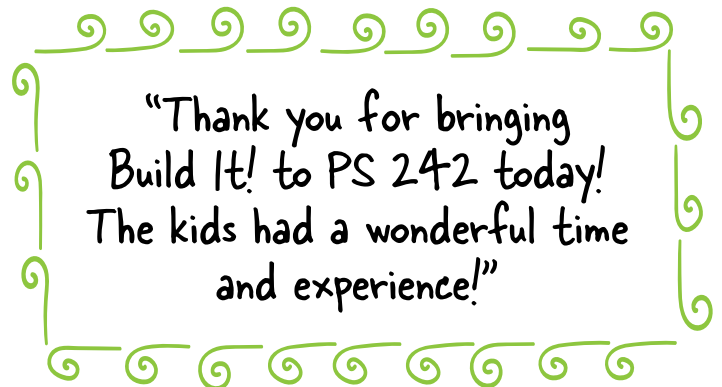
Investigate the ways animals protect themselves from predators. Meet our live animals that use defense mechanisms to stay safe. Create your own animal by using the animal defense of your choice.

**Fee: \$300**

### **Up in the Air — Kindergarten-Grade 5**

Explore the science of flight and dream BIG as you make your own gliders based on your observations of various AIR-MAZING experiments and learn about milestones in the history of aviation.

**Fee: \$300**



### **Spirit of Invention — Kindergarten-Grade 5**

Learn about the special functions of historical inventions such as the telephone, toaster and hair dryer. Hear about the lives of famous inventors such as Thomas Edison and Marie Curie before rolling up your sleeves and creating your own futuristic invention using an assortment of recycled materials.

**Fee: \$300**

# Outreaches

## —Museum On The Go!

“Watching the girls’ faces was priceless and surely one they will remember for a long time!! We look forward to working with you again.”

### **Fish Tales—Kindergarten - Grade 6**

Learn about fish habits and their habitats, the maritime industry on Long Island and comparative anatomy by studying an actual fish dissection up close—including a taste sample after our instructor cooks it!

**Fee: \$350**

### **Lucky Fortune –Grades 1-5**

Discover Chinese Lunar New Year festivities, stories and traditions in this multicultural awareness program. Learn about the symbolism of the Lion Dance and create your own Lion Dance parade mask.

**Fee: \$300**

### **KEVA® CoLab—Grades 2 - 5**

Explore ideas related to building construction and structural function based on LICM’s popular KEVA® exhibit. Become junior architects and engineers as you make your own KEVA® structures, experiment with gravity and speed and engage in collaborative play!

**Fee: \$300**

### **Game On – Grades 2-6**

Step into the role of a game developer as you design your own game from the initial concept to a finished prototype, including materials such as cardboard trays, marbles, LED lights and your own graphics in this fun STEAM program!

**Fee: \$350**

### **Freedom Quilts – Grades 2-6**

Discover the stories that quilts told in the days of the Underground Railroad to assist runaway slaves on their journey to freedom. Learn to “read” various quilt codes; then use mathematical patterns and fabric shapes to design a quilt that tells your very own personal story.

**Fee: \$300**

### **A Balancing Act—Grades 2 - 6**

Learn about the cool science of gravity, speed and motion as we experiment with pennies and balancing toys in a fun way! Then, make a high-flying “acrobat” that can balance on a piece of string.

**Fee: \$350**

Ask about quantity discounts.

## Virtual Outreach Options



The Museum offers Virtual Outreach options. Call or email for more information on this resource.

Ask about our new Summer Enrichment Program! Every year we introduce a quality summer Outreach that follows the National Reading Summer Theme.



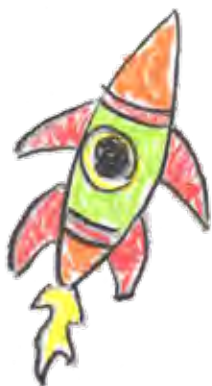
# New Exhibit Experiences

## Moon to Mars

January 18 – May 4, 2025



Get ready to be transported to a world of possibilities in space travel. Students will be inspired by the current realities and future dreams of interplanetary travel. Learn about the diversity of skills and experience required to make space exploration a reality. In this dynamic exhibit, your young explorers will:



- Design and fly their own rocket
- Take the controls while hovering in orbit above another planet in our Orion Spacecraft
- Experience what it feels like to walk in a reduced gravity environment
- Navigate new terrain in the Lunar Rover
- Construct a new base at the Moon Base Builder

This exhibit was created by the Omaha Children's Museum and designed with support from NASA's Deep Space Exploration Systems at Johnson Space Center.

## Dinosaurs: Fossils Exposed

Opens May 17, 2025

Get ready for a prehistoric adventure in this interactive exhibit featuring real world fossil specimens. Students are greeted by six full scale reconstructions of iconic dinosaurs including a fierce Tyrannosaurus rex and the massive Brachiosaurus, providing a sense of scale and wonder.



Dinosaurs: Fossils Exposed provides students with opportunities to:

- Use paleontologist tools to search for dinosaur bones in a dig site
- Examine preserved dinosaur bones, footprints, and even fossilized eggs.
- Compare your size as you stand beside the 6' 1" femur bone of an Apatosaurus (Brontosaurus)
- Explore scale as you inspect castings of fossilized dinosaur footprints and see how your hand or foot compares.

Dinosaurs: Fossils Exposed is made possible by the Museum of Discovery, Little Rock, Arkansas.



Bring coupon on page 13 and proof of your NY State teaching license and you will receive a discount on your purchase of an LICM family membership. \$15 off LICM "Plus" Membership

# School Community STEM Nights

## Build a Strong School Community

Looking to create great engagement with student families? Seeking ways to build a strong school community?

Bring LICM's fun, hands-on STEM activities to your school! Students, families, faculty and parent groups can join in to explore science together through play-based learning activities.



Choose one or multiple STEM activity stations for special themed night of play-based STEM learning to engage, students, teachers and families.

Events can be for class family nights, larger school events, and family festivals.



**KEVA Challenges** – The KEVA gallery is one of LICM's most popular! Step right up and try your hand at KEVA building challenges brought directly to you.

**Bug Bonanza** – Discover what makes an animal an insect and investigate their different body parts. Build your own bug to take home!

**Kaleidoscope Wonders** – Investigate the patterns around us as you design your own kaleidoscope.

**Nebula Spin Art** – Explore our universe, learning about how gigantic clouds of gas and dust form nebulas in space. Create your own colorful model nebula that is just as unique as the real thing.

**Binary Code Bracelets** – Learn how computers talk to each other as you make your own binary code bracelet.

**Cotton Ball Launchers** – Explore the concepts of potential and kinetic energy as you build a cotton ball launcher. How far can your cotton ball go?

**Choose from our workshop menu or our pop-up menu.**

**Workshops (30-60 minutes):** Choose one activity.

**Rockin' Roller Coasters** – Explore force, energy, and gravity as you design the ultimate coaster.

**Balancing Bird Perch** – Teams will challenge each other to engineer the tallest perch for your balancing bird.

**Mousetrap Mischief** – Put your heads together to create the trickiest trap for your mouse

**Critter Crossing** – Experiment with structure and motion to get your critter safely across a balancing bridge.

**Pop-Ups (10-20 minutes):** Choose one or more stations for your special event.



**For more information or to discuss your event, please email [STEM@licm.org](mailto:STEM@licm.org).**

# Celebrate Your Students



"I had so much fun...why do we have to leave?"

## Take the play and learning off-site with an LICM Friends & Family Fun Night!

- Promote Family Interaction
- Provide Educational Enrichment
- Have Fun as You Make Memories!

Exclusive evening hours to explore, dream, and play in the Children's Museum.

Start the year building new relationships;  
End the year sending a fond farewell!

Call (516) 224-5844 to learn more about our Friends & Family Fun Nights!



# Magical, Memorable Events

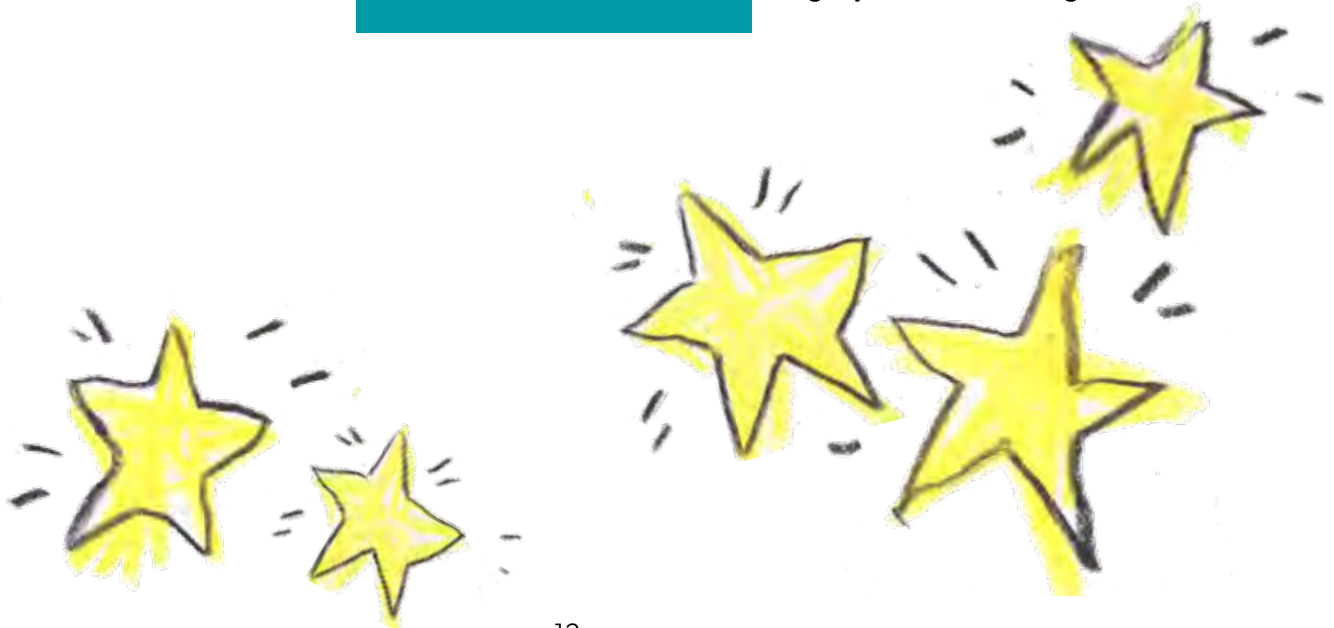


Nunley's Carousel is open and spinning memories again. Enjoy exclusive use of the Pavilion & Carousel for your next school event.

#### Perfect for:

- Fundraisers
- Moving Up & Reunion Events
- School Dances
- Reunions

Talk with our Event Rentals specialist to customize your event to ensure the event is remembered for years to come. Call (516) 224-5844 to get your event moving.



# LICM Contact List

Feel free to contact us to learn more about the variety of programs designed to meet the needs of your students, your faculty and your own professional development.

## Field Trip, Theater School Visits and Group Reservations:

(516) 224-5869 or [reservations@licm.org](mailto:reservations@licm.org)

**Membership** (Family Discounts for Educators):  
(516) 224-5821 or [membership@licm.org](mailto:membership@licm.org)

**Museum Rentals** (Friends & Family Fun Nights):  
(516) 224-5844 or [kjoseph@licm.org](mailto:kjoseph@licm.org)

## Outreach Bookings:

(516) 224-5847 or [outreach@licm.org](mailto:outreach@licm.org)



Ask about LICM Professional Development options. Call (516) 224-5809.

## 2024-25 Educator Discount

You've enjoyed the Museum with your students; now bring your family!

# SAVE \$15 off a "Plus" Membership



Plus Membership categories are available to meet a variety of family sizes and needs.

Visit [licm.org](http://licm.org) for membership details. Present this coupon with proof of your NY State teaching license at LICM Membership Desk when purchasing your membership. May not be combined with any other discount. Valid through June 30, 2025





“Not only are the children having a blast at the museum, so are the adults!”

I just wanted to say thank you so much for the fish tales’ program that you did for us. We got so much great feedback from this event.



“We love our educator for his/her passion, knowledge and patience. (Kids hug their educator at the end of the guided tour, saying thanks and goodbye)”

**nationalgrid**

**Looking for STEM classroom resources?**

National Grid has prepared materials for educators for all grade levels. Visit: <https://ngridenergyworld.com/teachers/>



**Council on the Arts**

*Operational support is provided from the New York State Council on the Arts with the support of the Office of the Governor and the New York State Legislature*