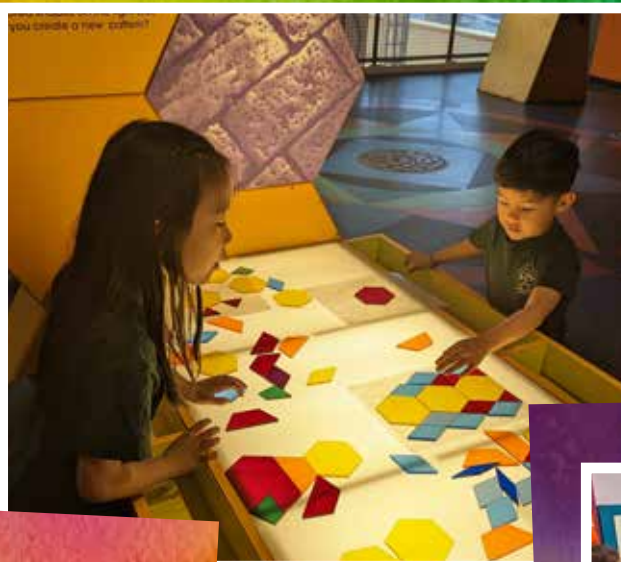


EDUCATION CATALOG

2023-24



**“Not only
are the children
having a blast at
the museum,
so are the adults!”**



www.licm.org/schools

DOUBLE YOUR LEARNING



Here's how it works:

Select **two** LICM programs during your visit day to maximize the value of your bus investment. Consider adding a live **theater** performance to your day **OR** add a second field trip **exploration** to create an unforgettable day for your students.



TIP: Create a day that covers all the educational bases by doubling up on experiential learning with our "STEM to STEAM" field trip, coupled with theater experiences pulled from the pages of popular literature. Combine our "Play & Wonder" field trip and its exciting Animal Encounter with a trip to the LICM Theater to watch Mo Willems' & Leo Lionni's popular animal characters—come to life. These are just some of the popular combos available to your students with **"Double Your Learning!"**

BONUS: When you book the "Double Your Learning" option, your schedule will include a 30-minute lunch break. **The cafeteria usage fee is waived** for groups booking this option.

Fee: **\$22.50**/student; includes guided morning and afternoon programs and cafeteria usage.

Long Island Children's Museum is ready to support the hard work teachers do every day. Schedule an unforgettable field trip that brings classroom lessons to life. Hands-on activities, live theater performances and dynamic environments allow kids to test what they've learned through direct interactions.

Choose a field trip that addresses the age and curriculum goals of your class.

Maximize Students Learning Experiences ...
SAVE 25%!

Our popular "Double Your Learning" option stretches field trip budgets while addressing the full spectrum of curriculum themes.



"Educators were knowledgeable, effective, engaging and connected immediately with the students, particularly with students with alternate learning needs."

FIELD TRIPS



Check out our LICM field trip Pinterest boards!

Watch as your students' become scientists, explorers, inventors and engineers as they move through LICM's two stories of interactive exhibits. Concepts you've introduced in the classroom will come to life through hands-on experiences as they make observations and experiment with solutions. Field trip options and live theater performances align with a range of state and national learning criteria including the Common Core and Next Generation Science Standards. All guided field trips are led by trained Museum Educators.

LICM is a popular field trip destination--book early for preferred dates and times! (Ask about Cafeteria availability or a Museum Store visit when booking.)

The Children's Museum offers reduced admission rates for all school visit participants. Built around specific themes, our guided field trips utilize selected exhibits highlighting key learning concepts. Exhibits cannot be substituted. **The cost per student is \$15.** (See chaperone policy on page 6)

Guided field trips are available Tuesday through Friday; tour time choices are:
 10 – 11:30 a.m. Noon-1:30 p.m.

Play & Wonder —Nursery-Kindergarten

The educational value of play is immeasurable. Young children will naturally play in, and respond to, our developmentally appropriate galleries. Children, together with their chaperones, experience the benefits of tactile, socio-dramatic and scientific play.

Exhibits: *TotSpot, Sandy Island, Sound Showers*
Workshop: "Animal Adventures" - children explore and learn about our natural world through close up animal encounters.

"From the ease of registration to check in, to programs, we will definitely return next year!"

Explore & More—Kindergarten-Grade 5

Children learn through hands-on experiences and use critical thinking skills to solve problems found in everyday life. Using newly acquired skills of inquiry, creativity and collaboration, students will explore multi-sensory experiences that extend classroom learning.

Exhibits: *Bubbles, Your House, My House, Pattern Studio and Comings & Goings*



STEM to STEAM—Grades 1-6

Working together children will examine how science, technology, engineering, math AND art combine to shape our natural world and the built environment. Through active learning, students are encouraged to make predictions and discover the answers to questions using hands-on experiences.

Exhibits: *Tool Box, KEVA, Feasts for Beasts, Communication Station*

Self-Guided Tour

Self-guided tours are available Tuesday–Friday for groups with a minimum of 10 children. Reservations must be made at least two weeks prior to the tour date and are based on availability. The cost for a self-guided tour is **\$14** per person (all children and adults).



You will receive confirmation of your reservation. Bring the confirmation with you on the day of your tour and present at the Box Office to receive the group rate. All participants in a self-guided tour must be present to qualify for the discounted rate. Cafeteria reservations are not available to self-guided tour groups. Blackout dates may apply. Membership, coupons, guest passes, special offers, etc. are not valid for groups, school visits or self-guided tours.

THEATER PROGRAMS



**““Fantastic Show!
Best field trip ever, my
students enjoyed every
minute of the show!”**

LICM Theater’s School Performance season provides the perfect opportunity to introduce students to the excitement of the performing arts. Our 2023-24 season is a visually rich season pulled from the pages of classic children’s books. Students will enjoy adaptations of the works of L. Frank Baum who has thrilled generations of readers, as well as the modern classics of Leo Lionni and Mo Willems.

Productions offered this season share thematic messages involving friendship, community and kindness and remind audiences that with support and guidance from others, we can grow, express our talents, and be true to ourselves. Students will see themselves in the characters in our productions and have an opportunity to explore social emotional learning concepts: self-awareness, social awareness and how their decisions interact with their community.

All performances include talkbacks as part of the total theater experience. Education activity packets for each production are available for download from the LICM website to aid you and your students.

The cost per student is **\$15**. (See chaperone policy on page 6).

Theater field trip arrival times are 10 a.m. and noon. Performances and theater activities run 90 minutes in length.

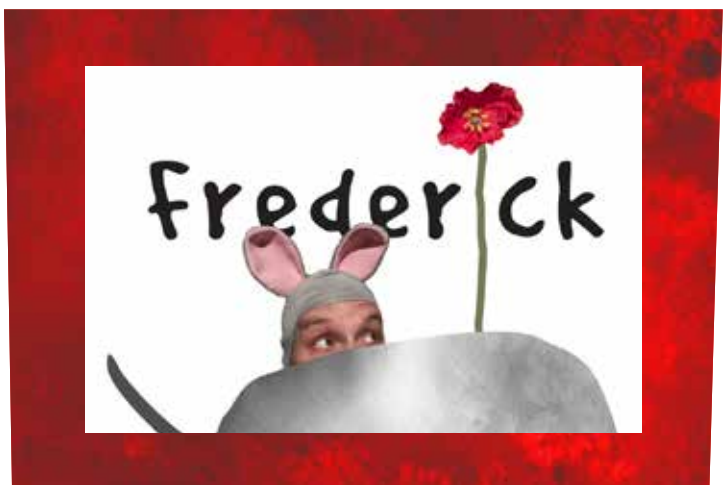
Frederick - Pre-K to Grade 3

Based on the book by Leo Lionni. Book by Suzanne Maynard Miller; Music and lyrics by Sarah Durkee and Paul Jacobs.

Available: November - December 2023 and February 2024

It’s a beautiful summer sunny day in the meadow. Mouse friends Nellie, Sunny, Baby, Ernest and Frederick are playing their musical instruments and having fun singing, until a leaf falls from the sky...autumn is here! Winter will be coming soon! All the mice get to work gathering supplies for winter, except...where is Frederick? He is gathering supplies, too, in his own unique way.

Told through the eyes of our mice friends, the musical expands on the themes of the classic Leo Lionni book:



What is work? What does it mean to be “different?” What is the value of the arts? With toe-tapping Americana music inspired by bluegrass, gospel and folk, “Frederick” is an energetic, engaging story about the power of community, and that no mouse gets left behind.

Produced by special arrangement with THE DRAMATIC PUBLISHING COMPANY, INC of Woodstock, Illinois. Frederick was developed and initially presented at Omaha Theater Company (The Rose), March 2014, Matthew Gutschick, Artistic Director. The world premiere production was at Chicago Children’s Theatre, October 2014, Jacqueline Russell, Artistic Director

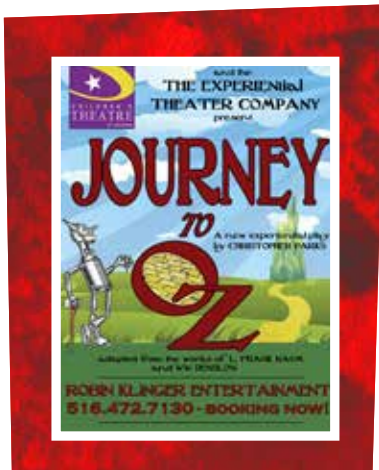
THEATER PROGRAMS

Journey to Oz -Grade 1 -5

Based on the work of author L. Frank Baum and illustrator W.W. Denslow
Written by Christopher Parks of Experiential Theater Company

Available: February-March 2024

Inspired by L. Frank Baum's stories, this clever adaptation puts the audience front and center, literally! Kids become cast members, singing dancing, and acting onstage alongside the professional cast. One of our most interactive shows at LICM Theater, this production received rave reviews in its prior run. Going beyond the traditional telling of the Oz stories, "Journey to Oz" uses personal journal entries and historic newspaper headlines to bring the history of author L. Frank Baum and illustrator W.W. Denslow to life. Dorothy, the Scarecrow, Tin Man, and Cowardly Lion take the audience with them on this lively, playful trip down the yellow brick road.



Don't Let the Pigeon Drive the Bus! The Musical!

- Pre-K to Grade 2

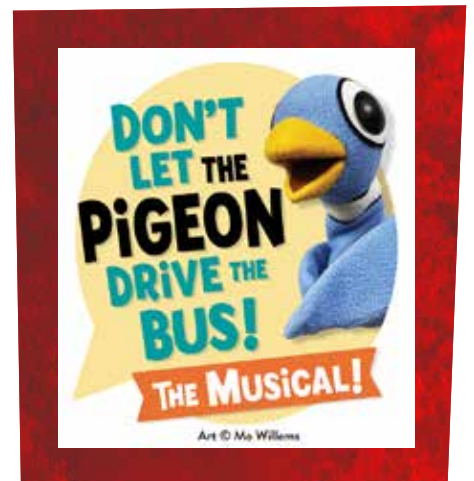
By Mo Willems and Mr. Warburton; Music by Deborah Wicks La Puma

Available: April-June 2024

Back by popular demand after a sold-out 2023 run, "Don't Let The Pigeon Drive the Bus! The Musical!" is an upbeat, energetic show based on four of Mo Willems' popular Pigeon books. The Pigeon, Bus Driver and some zany passengers sing and dance their way to helping The Pigeon find his "thing." Our audiences thoroughly enjoyed singing and flapping along with us.

Students laugh at The Pigeon's antics while learning about the power of persistence, the importance of trying new things, and handling big emotions.

Produced by special arrangement from Music Theater International.



"It was entertaining and held the student's attention. We had a discussion about feelings' after the show, too. It was a fabulous trip. Thank you!"



SCHEDULE YOUR VISIT



LICM makes scheduling your visit simple: Review our **FAQs** at www.licm.org/schoolsfaq and then complete the online reservation form. We'll take it from there! (Tip: Completing the online form speeds up the reservation process.)

Alternately, you can call the reservation office at (516) 224-5869, Monday

through Friday between 9 a.m. and 5 p.m. Remember: Popular times fill up quickly.

Please advise the Museum in advance if your group has any special needs so that we may assign staff accordingly. Guided visits are offered Tuesday–Friday from 10–11:30 a.m. and from noon–1:30 p.m. Tour times cannot be adjusted.

Cost

The Children's Museum offers reduced admission rates for all school visit participants. The cost per student is **\$15** for a guided tour. (See chaperone policy below.)

**Give Your Students extra Museum time!
Ask the Reservation Manager about adding
more time for self-guided exploration.**

Additional fees will apply.

A 50% non-refundable deposit (or BOCES or School District purchase order) and "Signature Page" (sent to you when you register) is required 30 days before your visit to hold your reservation. LICM reserves the right to cancel a reservation if required materials are not received on time. Outstanding balances must be paid upon arrival on the day of your visit (unless purchase order has been received). If at least four weeks' notice of cancellation is given, reasonable efforts will be made to reschedule your class on another date. No refunds are issued for school trips.

All of the Long Island Children's Museum's school visits may be paid with Nassau County BOCES Arts in Education and Suffolk County BOCES funds. LICM is also an approved vendor with the New York City Board of Education.

Guided Tour Group Size

The minimum number of students per class is 10 children; maximum is 25.

Chaperone Policy

Guided field trip/theater programs:

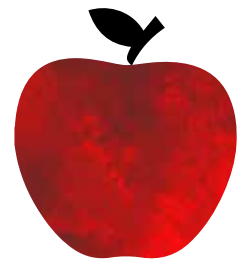
- One adult chaperone is required for every three kindergarten and younger students
- One adult chaperone is required for every five children in grades 1–6. These chaperones are admitted free and must stay with their group at all times. (Adult chaperones include teachers, classroom aides, etc.) Additional adults that exceed the ratios mentioned above will be charged at the group rate (**\$15** each or **\$22.50** for Double Your Visit). A limit of five additional adults per date is permitted for each organization.
- School nurses and 1:1 aides are not included in the chaperone ratio identified above and are not charged for admission

Galleries

In the event that a designated gallery cannot be made available, LICM reserves the right to provide a substitute exhibit.

Lunch Time at LICM

While you're feeding their minds during an LICM field trip, schedule time to feed their tummies! If your group wishes to schedule lunchtime at LICM, a reservation request must be made in advance. (The LICM Cafeteria offers vending service only.) The cafeteria is available on a limited basis and by reservation only for groups bringing lunches. A usage fee of \$55 (for up to 50 individuals) will apply. An additional fee of \$35 is applied for groups between 50–100 individuals.



OUTREACHES

—Museum On The Go!

Can't get to the Long Island Children's Museum?
Let the museum come to you!

Led by Museum Educators, all workshops embody the museum's philosophy that children learn best by seeing, touching, doing, and having fun.

Workshops last approximately one hour and are generally offered for groups of 25-30 children and their adult chaperones.

Ask about discounts available for multiple bookings when you call. LICM Outreach programs are registered with BOCES. Call (516) 224-5847 or e-mail outreach@licm.org to book an LICM Outreach. (Mileage fees apply for locations farther than 30 minutes away.)

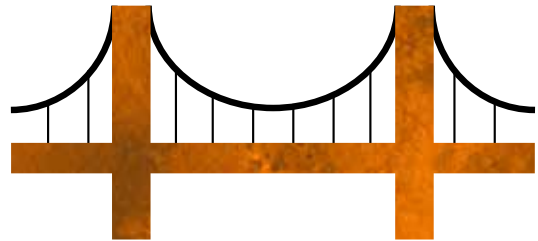
"Thank you for bringing Build It! to PS 242 today! The kids had a wonderful time and experience!"

Bubble POP! — Nursery - Grade 5

Become a bubble scientist and learn more about the unique physical properties of bubbles as you experiment at our three interactive stations. Experiment making bubbles and take home your own bubble print.
Fee: \$325

All Abuzz — Pre-K-Grade 3

Junior entomologists will meet a hissing cockroach and discover insects that camouflage. They will learn what makes an animal an insect and the different body parts they have. Students will create their own bugs. Children will be provided with a field guide page about their bug that can be done after the program.
Fees: \$275



Build It — Pre-K - Grade 3

How did the Leaning Tower of Pisa get its name? Explore the scientific forces behind structures such as bridges and towers as you apply building design concepts to construct a free-standing structure out of Magic Noodles and toothpicks.
Fee: \$275

Catch Me if You Can!

— Kindergarten through Grade 5

Investigate the ways animals protect themselves from predators. Meet our live animals that use defense mechanisms in order to stay safe. Create your own animal by using the animal defense of your choice.
Fee: \$275

Up in the Air— Kindergarten-Grade 5

Explore the science of flight and dream BIG as you make your own gliders based on your observations of various AIR-MAZING experiments, and learn about milestones in the history of aviation.
Fee: \$275

Spirit of Invention

— Kindergarten-Grade 5

Learn about the special functions of historical inventions such as the telephone, toaster and hair dryer. Hear about the lives of famous inventors such as Thomas Edison and Marie Curie before rolling up your sleeves and creating your own futuristic invention using an assortment of recycled materials.
Fees: \$275



OUTREACHES

—Museum On The Go!

“Watching the girls’ faces was priceless and surely one they will remember for a long time!! We look forward to working with you again.”

Fish Tales — Kindergarten - Grade 6

Learn about fish habits and their habitats, the maritime industry on Long Island and comparative anatomy by studying an actual fish dissection up close—including a taste sample after our instructor cooks it!
Fee: \$325

Lucky Fortune — Grades 1-5

Discover Chinese Lunar New Year festivities, stories and traditions in this multicultural awareness program. Learn about the symbolism of the Lion Dance and create your own Lion Dance parade mask.
Fees: \$275

KEVA® CoLab — Grades 2 - 5

Explore ideas related to building construction and structural function based on LICM’s popular KEVA® exhibit. Become junior architects and engineers as you make your own KEVA® structures, experiment with gravity and speed and engage in collaborative play!
Fee: \$275

Game On — Grades 2-6

Step into the role of a game developer as you design your own game from the initial concept to a finished prototype, including materials such as cardboard trays, marbles, LED lights and your own graphics in this fun STEAM program!
Fee: \$325

Freedom Quilts — Grades 2-6

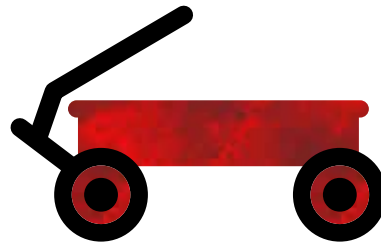
Discover the stories that quilts told in the days of the Underground Railroad to assist runaway slaves on their journey to freedom. Learn to “read” various quilt codes; then use mathematical patterns and fabric shapes to design a quilt that tells your very own personal story.
Fee: \$275

A Balancing Act — Grades 2 - 6

Learn about the cool science of gravity, speed and motion as we experiment with pennies and balancing toys in a fun way! Then, make a high-flying “acrobat” that can balance on a piece of string.
Fee: \$325

Ask about quantity discounts.

VIRTUAL OUTREACH OPTIONS



The Museum offers Virtual Outreach options. Call or email for more information on this resource.

Ask about our new Summer Enrichment Program! Every year we introduce a quality summer Outreach that follows the National Reading Summer Theme.

Long Island Children’s Museum is a registered vendor with BOCES and the New York City Department of Education.

SCHOOL COMMUNITY STEM NIGHTS

Looking to create great engagement with student families and build a strong school community?



Bring LICM's fun, hands-on STEM activities to your school! Students, families, faculty and parent groups can join in to explore science together through play-based learning activities.



Choose from our workshop menu or our pop-up menu:

Workshops (30-60 minutes): Choose one activity.

Rockin' Roller Coasters – Explore force, energy, and gravity as you design the ultimate coaster.

Balancing Bird Perch – Teams will challenge each other to engineer the tallest perch for your balancing bird.

Mousetrap Mischief – Put your heads together to create the trickiest trap for your mouse

Arcade Adventures – Develop your own school arcade as you design a 3D game from initial concept to finished prototype.

Pop-Ups (10-20 minutes): Choose one or more stations for your special event.

KEVA Challenges – The KEVA gallery is one of LICM's most popular! Step right up and try your hand at KEVA building challenges brought directly to you.

Bug Bonanza – Discover what makes an animal an insect and investigate their different body parts. Build your own bug to take home!

Kaleidoscope Wonders – Investigate the patterns around us as you design your own kaleidoscope.

Nebula Spin Art – Explore our universe, learning about how gigantic clouds of gas and dust form nebulas in space. Create your own colorful model nebula that is just as unique as the real thing.

Binary Code Bracelets – Learn how computers talk to each other as you make your own binary code bracelet.

Cotton Ball Launchers – Explore the concepts of potential and kinetic energy as you build a cotton ball launcher. How far can your cotton ball go?

Outcomes:

- Family members have better understanding of their child's learning style as they work together as a team.
- Stronger lines of communication between families and school leaders.
- Fun learning nights for all to enjoy.

Availability:

We know that every event will be different based upon your needs, so pricing will depend upon the number of participants, the length of the event, and the number of activities. Events can be for class family nights, larger school events, and family festivals. For more information or to discuss your event, please email STEM@licm.org.

NEW EXHIBIT EXPERIENCES

Very Eric Carle, A Very Hungry, Quiet, Lonely, Clumsy, Busy Exhibit

January 27 through May 12, 2024

Step into the pages of author and illustrator Eric Carle's colorful picture books, while discovering and playing with five special insects from his well-known "Very" book series. Students can follow the path of the Very Hungry Caterpillar, weave a web with the Very Busy Spider, find their inner light with the Very Lonely Firefly, jump and flip with the Very Clumsy Click Beetle, and compose a night symphony with the Very Quiet Cricket

In the "Reading Zone," class groups can explore visual literacy and reading through words, pictures and video. Listen to Eric Carle read his stories and talk about his process or read their own favorite Eric Carle story with a friend in the Reading Zone.

Each of the "Very" stories are a testament to Eric Carle's love of nature, his respect for the emotional lives of children, and his recurring themes of friendship, creativity, and the power of imagination.



Thomas & Friends™ : Explore the Rails!

May 25 through September 9, 2024



Step onto the Island of Sodor where students can climb aboard a large model of Thomas the tank engine, race trains along a giant track, work together to sort and load cargo and maintain engines.

Classes engage in a variety of science, technology, engineering and math (STEM) challenges from a simple sorting and shape identification to more complex engineering obstacles. As they take on STEM challenges and test their abilities, the smiling faces of Thomas, Percy, Victor and others are there to offer encouragement and remind children how "really useful" they all are.

Learning outcomes:

- Develop foundational skills that foster STEM literacy through playful learning experiences.
- Solve a variety of challenges, from simple sorting and shape identification to more complex engineering obstacles.
- Learn valuable STEM skills throughout the exhibit by building an intricate wooden train set, assembling a large train and navigating through Thomas' imaginary world.

© 2019 Gullane (Thomas) Limited. Thomas & Friends™: Explore the Rails! was created by Minnesota Children's Museum, presented by Fisher-Price and sponsored by 3M.

CELEBRATE YOUR STUDENTS



“This is hands-on learning that keeps the kids moving and interacting. Perfect workshop balance with lecture time vs. practicing skills.”

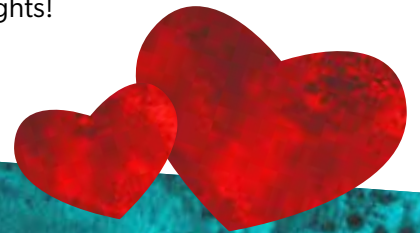
Take the play and learning off-site with an LICM Friends & Family Fun Night!

- Promote Family Interaction
- Provide Educational Enrichment
- Have Fun as You Make Memories!

Exclusive evening hours to explore, dream, and play in the Children’s Museum.

Start the year building new relationships; End the year sending a fond farewell!

Call (516) 224-5844 to learn more about our Friends & Family Fun Nights!



MAGICAL, MEMORABLE EVENTS



Nunley's Carousel is open and spinning memories again. Enjoy exclusive use of the Pavilion & Carousel for your next school event.

Perfect for:

- Fundraisers
- Moving Up & Reunion Events
- School Dances

Talk with our Event Rentals specialist to customize your event to ensure the event is remembered for years to come. Call (516) 224-5844 to get your event moving.

LICM CONTACT LIST

Feel free to contact us to learn more about the variety of programs designed to meet the needs of your students, your faculty and your own professional development.

Field Trip, Theater School Visits and Group Reservations:
(516) 224-5869 or reservations@licm.org

Membership (Family Discounts for Educators):
(516) 224-5821 or membership@licm.org

Museum Rentals (Friends & Family Fun Nights):
(516) 224-5844 or kjoseph@licm.org

Outreach Bookings:
(516) 224-5847 or outreach@licm.org



Ask about LICM Professional Development options. Call (516) 224-5809.

2023-24 EDUCATOR DISCOUNT

You've enjoyed the Museum with your students; now bring your family!

SAVE \$15 off a "Plus" Membership



Plus Membership categories are available to meet a variety of family sizes and needs.

Visit licm.org for membership details. Present this coupon with proof of your NY State teaching license at LICM Membership Desk when purchasing your membership. May not be combined with any other discount. Valid through June 30, 2024



“We love our educator for his/her passion, knowledge and patience. (Kids hug their educator at the end of the guided tour, saying thanks and goodbye)”

“This is the first field trip after the pandemic for our first graders. The kids are enjoying every minute of their visit and we will be back next school year.”

“Excellent hands on activities and engaging manipulatives to build and develop creativity.”

nationalgrid

Looking for STEM classroom resources?

National Grid has prepared materials for educators for all grade levels.
Visit: <http://www.ngridenergyworld.com/>



**Council on
the Arts**

Operational support is provided from the New York State Council on the Arts with the support of the Office of the Governor and the New York State Legislature