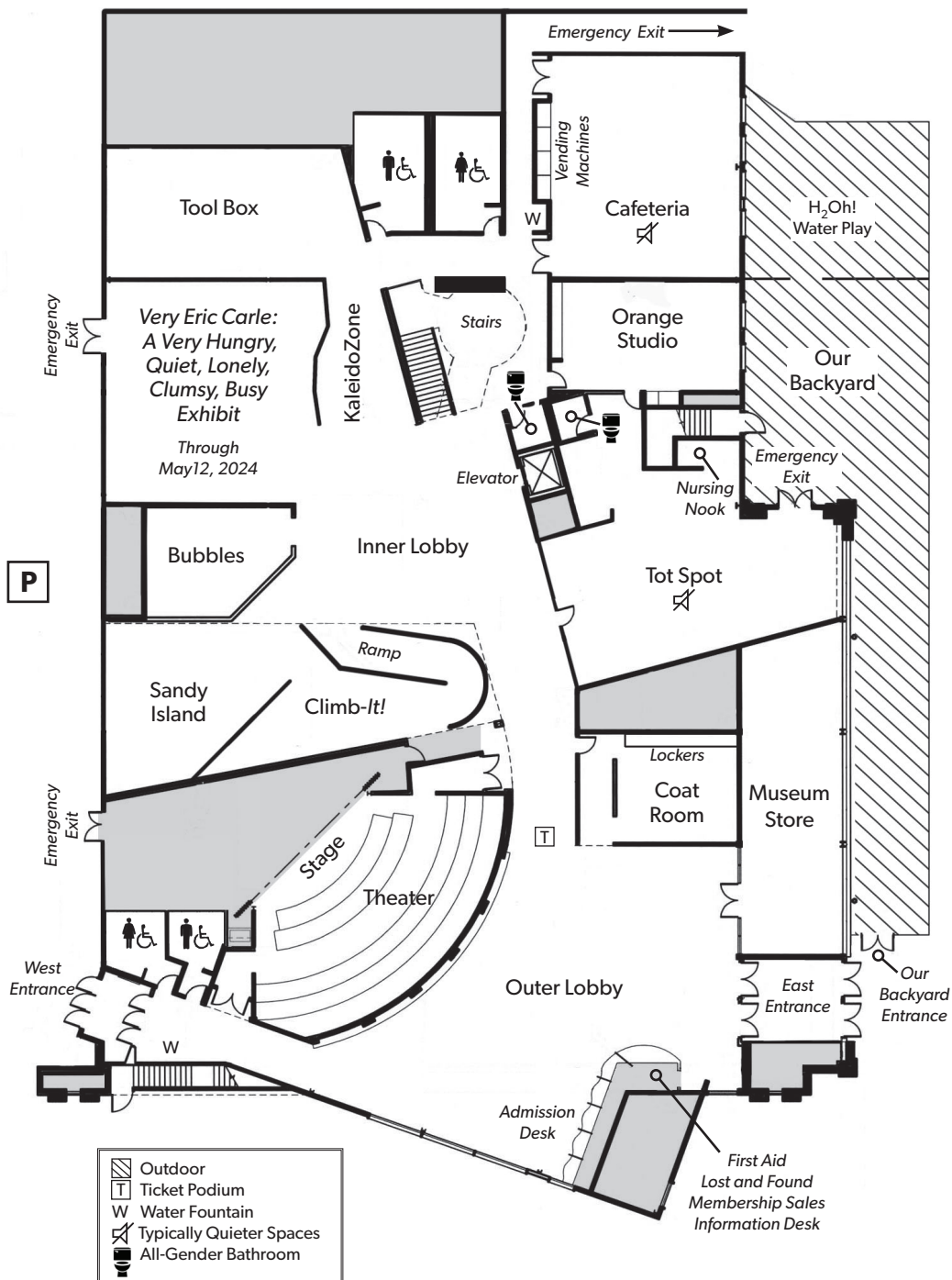
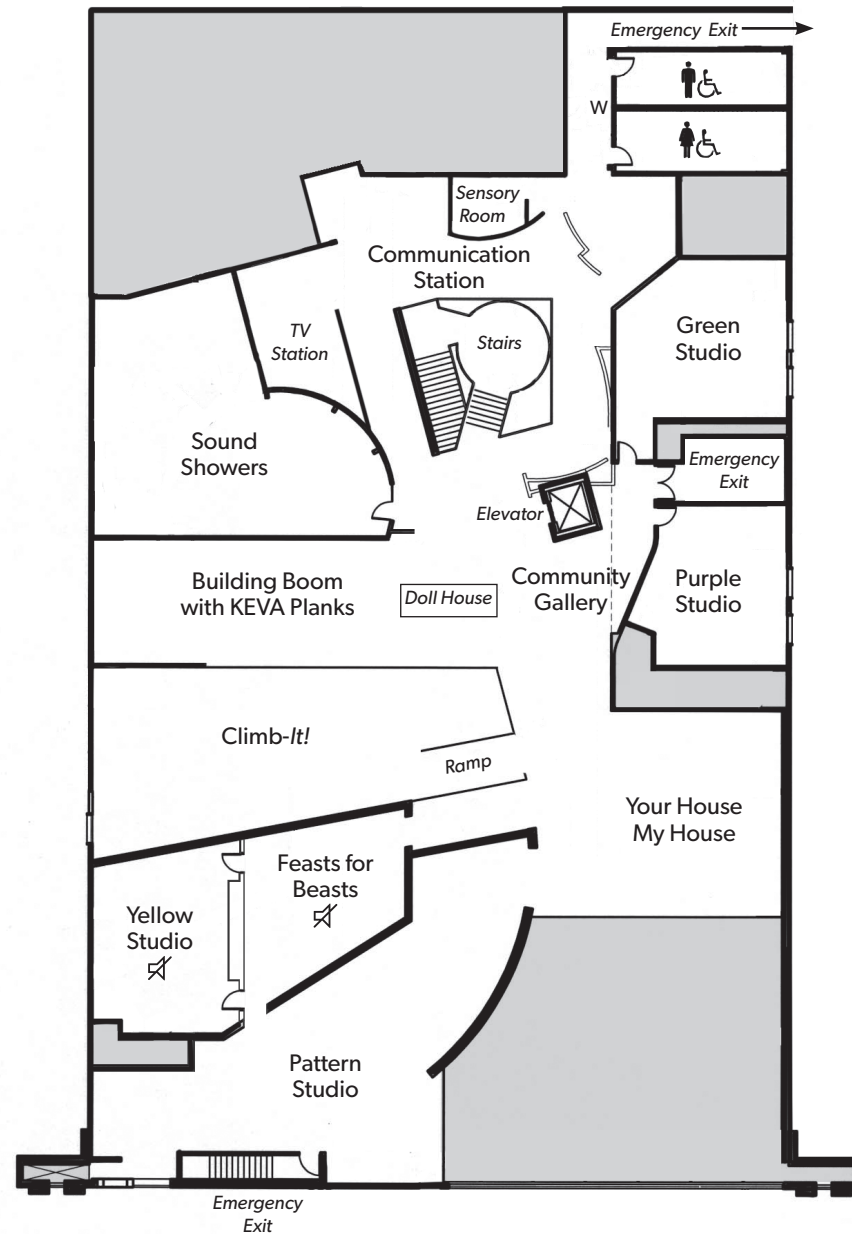


## First Floor



Charles Lindbergh Blvd.

## Second Floor



**Long Island Children's Museum**  
 11 Davis Avenue, Garden City, NY 11530  
 (516) 224- 5800 • [www.licm.org](http://www.licm.org)



LICM is a not-for-profit institution chartered by the New York State Board of Regents.

**Long Island Children's Museum** is a unique learning laboratory that inspires children and adults through interdisciplinary, hands-on, fun experiences. LICM believes that children learn best by seeing, touching, and doing. Exhibitions are designed with curious explorers (infants through 12 and their grownups) in mind.

### Hours:

Check website ([licm.org](http://licm.org)) for daily hours of operation.

### Admission:

**\$17** Adults and Children (age 1+)

**\$16** Seniors over 65

No charge for Museum members or children under 12 months.

### To ensure your enjoyment and safety, as well as other guests:

- Adults must be accompanied by children.
- Children are to be attended at all times.
- Food is to be confined to the cafeteria. Vending machines are available.
- Strollers and stools should not be placed next to railings on the second floor.
- Climb-it@LICM: Children must be over the age of four and/or at least 42" tall to participate.
- A hand stamp may be obtained to exit the museum and return later today.
- Hand sanitizers are located throughout the museum.
- All museum facilities are accessible to people with disabilities.

### Baby Care

Changing tables are available in all LICM restrooms and in the Our Backyard exhibit. Nursing is allowed anywhere in the Museum. There is a private nursing area in the TotSpot gallery on the first floor.

### Coat Room (Outer Lobby)

Valuables should not be left unattended. Locker keys are available at the front desk; a refundable deposit (\$5) is required.

### Information Desk (Outer Lobby)

Located in the first floor lobby; services include membership sales, first aid and lost and found.

### Museum Store

Fun, interactive and educational toys selected to complement museum exhibits and experiences. Members receive a discount on every purchase. Proceeds support LICM's programs and exhibits.

### Theater

Interactive performances held year-round in our 144-seat, state-of-the-art theater. Tickets available at admission desk or online ([www.licm.org](http://www.licm.org)).

### Become a Member Today!

A portion of your paid admission can be applied toward a membership on the day of the visit. Membership applications are available at the Information Desk.

## LICM Exhibits

### Bubbles

This interactive sensory experience will naturally involve and excite children and adults.

### Sandy Island

Create sandy art, explore the beach and boardwalk and learn the sandy facts about Long Island.

### Climb-It@LICM

Stretch your muscles and imagination while venturing through this two-story climbing structure and its meandering ramp

### Very Eric Carle: A Very Hungry, Quiet, Lonely, Clumsy, Busy Exhibit-January 27-May 12, 2024

Step into colorful adventures based on the work of renowned and beloved author/illustrator Eric Carle, including the Very Hungry Caterpillar. Co-organized by Children's Museum of Pittsburgh and The Eric Carle Museum of Picture Book Art.™ & © 2024 Penguin Random House LLC. All Rights Reserved

### TotSpot

This enclosed play space is our favorite place for families with children under four. Our youngest visitors can enjoy both active and dramatic play. Admission is free, but a timed pass is required. (Available at admission desk.)

### ToolBox

Use hammers, nails, glue and more at the construction bench as you learn how tools make it easier for us to make and do things

### Our Backyard (Open May-September)

Connect with your inner naturalist as you explore our sensory gardens, play with the properties of water and experiment in our award-winning outdoor exhibit.

### Communication Station

Broadcast the news, create animations and explore communication from facial expressions to satellite technology.

### Sound Showers

Explore the sound in music and music in sound in this immersive exhibit. Uncover unexpected rhythms that are all around us.

### KEVA Planks

Join the LICM construction crew and build the design project of your dreams.

### Your House, My House

Explore big houses, little houses, even ones that float! Take a fantastic journey into homes around the world. No passport required.

### Pattern Studio

Explore patterns in art, nature and mathematics. Spin giant wheels, look through kaleidoscopes and create your own patterns using a variety of building blocks

### Feast for Beasts

Discover the amazing ways that animals find and eat their food. View live animals and interact with artifacts to take a bite out of scientific discovery.



Questions about LICM's accessibility programs and resources?  
Contact Beth Ann Balalos at 516-224-5853