

PARTNERS IN PLAY

Your Museum. Your Impact.

A LETTER FROM THE PRESIDENT

Hello Friends!

I'm Erika Floreska, President of Long Island Children's Museum, and I want to express our **deepest gratitude to YOU – our supporters** - in our very first donor newsletter!



As the **most visited museum on Long Island**, we're proud to continue the same mission we've had for **31 years** – Connecting all our communities' children, and those who care for them, to one another and a life of wonder, imagination, and exploration.

We're also leaning into **our vision**: Supporting the well-being of children and families through the Power of Play – because we know **the children who play together today will work and live together tomorrow**. **Support of LICM's Annual Fund is an investment in our future community.**

Right now, your support is more important than ever. LICM has been receiving between 8 – 10% of its annual budget from federal grants – totaling \$2.7 million since 2007. **As federal priorities shift, we face uncertainty about continued federal support. LICM also faces rising costs associated with operating the Museum and providing free/reduced-price admission to families in need.**

Despite these current challenges, **we remain committed to expanding museum access and delivering exceptional experiences for all families.** Play is more than just fun - it's how children learn, grow, and develop the critical thinking, collaboration, and creativity they'll need to thrive. These moments of joy and learning are **made possible by you** - our supporters.

LICM is YOUR Museum. As we look ahead to an exciting year, we invite you to stay connected, visit often, and join us in making a lasting impact on our shared community.

Thank you for your continued support, and we can't wait to see you soon!

Erika S. Floreska

NEW PERMANENT EXHIBIT COMING THIS FALL!

Opening October 11th and billed as a **“unique gift to Long Island”**, *Saltwater Stories* will be a new **1,900-square-foot permanent exhibit celebrating Long Island's rich maritime history, culture, and ecology.**

Saltwater Stories: We Need the Sea and the Sea Needs Me will provide **new educational programming and hands-on, interactive opportunities** for visitors and families to explore STEM and humanities concepts through a local lens:

- **Role-play life on the bay** in a recreation of a Long Island Bay House, which features a “magic window” looking out over a tidal marsh.
- **Work together in a classic Long Island Fish Market**: unloading the daily catch from the Garvey boat docked outside, sorting fish, or selling them at the checkout station.
- **Explore *Lifting the Ocean's Lid***, an immersive early learner area that recreates life on the bottom of the sea.

This foundation of cultural connection with the water prepares visitors for lifetime of caring for the well-being of the natural environment.

BE A PART OF LICM'S FUTURE HISTORY!

Naming and underwriting opportunities within the exhibit are available! Gifts of any size are welcome. To find out how you can be part of LICM's history, contact Erika Floreska at efloreska@licm.org.

Uniquely Long Island, Uniquely LICM



PARTNERS IN PLAY

Your Museum. Your Impact.



SEE WHAT'S HAPPENING AT YOUR MUSEUM!

Stop by for a visit! LICM has an exciting year planned, full of hands-on experiences that bring learning to life through the power of play. **Here are just some of the things happening at LICM:**

SEE THEM BEFORE THEY'RE GONE!

- **Moon to Mars:** Now through May 4th
- **Dinosaurs: Fossils Exposed:** May 17 - August 31st

SPECIAL EVENTS & CULTURAL FESTIVALS

- **Hop Into Spring!** family event: Saturday, April 12
- **Spring Break Week:** Mon., April 14 - Fri. April 18

VISIT OUR "ARTISTS' CORNER"!

- Experience ***Echoes of the Forest*** by artist, Ian Love, in residence now through May 11th.
- **Create with the artist** during hands-on workshops on Wednesday, April 16 at 11:30 a.m., 12:30, 1:30 and 2:30 p.m.

LICM THEATER PERFORMANCES

- **Elephant and Piggie's "We Are in a Play!"** by Mo Willems: April 14 - June 14
- Sensory-friendly performances are available

MARK YOUR CALENDAR FOR OPENING DAY!

- Our new permanent exhibit, ***Saltwater Stories*** opens on Saturday, October 11th. Don't miss it!

PLAN YOUR VISIT!

Check out the full [Events and Programming Calendar](#).

DONOR SPOTLIGHT:



Since 2018, **Guru Krupa Foundation Inc.** has generously helped LICM to bring STEM education and cultural celebrations to thousands of children and families across Long Island. Through their longtime support, LICM is able to provide hands-on learning experiences through the Westbury STEM Partnership and foster cultural appreciation through the Holi Festival, one of our most vibrant annual events.

For **Mukund Padmanabhan, Founder of the Guru Krupa Foundation**, investing in children's education is a priority. **"Children are our future,"** he shares. **"If they need help and you get that help to them when they're young, then it pays big dividends."**

This partnership allows students from the Westbury School District to experience STEM learning in an interactive and engaging way onsite at LICM as an extended classroom. **"It's not just about learning—it's about fun learning,"** Mukund explains. **"And if you give a child education, you open doors to the future."**

Beyond supporting STEM, the Guru Krupa Foundation also plays a vital role in supporting cultural programming at LICM, particularly the Holi Festival, which celebrates the arrival of Spring with music, dance, and vibrant colors.

"New York—and LICM—are melting pots of different cultures. It's important to learn about the people you live with," says Mukund. **"It's my hope that the Foundation's support will help children go from school, to college, and then into fulfilling careers."**

LICM is deeply grateful for the Foundation's continued commitment to ensuring that all children—regardless of background—have access to quality STEM education and meaningful cultural experiences to enhance their lived experiences.



Pictured: LICM President, Erika Floreska, Mukund Padmanabhan, and LICM Director of Development, Nyrekia White, at the 2024 Holi Cultural Festival color throw.

PARTNERS IN PLAY

Your Museum. Your Impact.



UNLOCK MORE WITH MEMBERSHIP!

Did you know LICM has membership programs fit for everyone?

Our members enjoy many benefits, including unlimited free admission to the Museum, "member only" hours, discounts on birthday parties, the LICM Theater, and at the Museum Store, access to 200+ Children's Museums and Science Centers, and so much more! **Ask about our Grandparents Membership!**

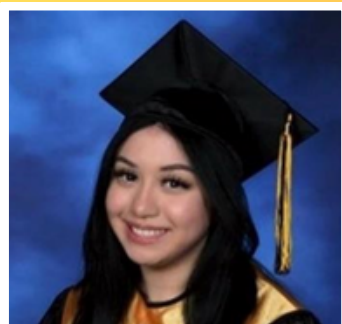
Become a member today by visiting our website at licm.org/membership or in person at the Box Office. For any questions, please contact membership@licm.org.

Upcoming "Member Only" Hours (9am-10am):

Tuesday, April 15	Thursday, April 17	Sunday, April 20
Sunday, May 4	Saturday, May 17	Sunday, May 18



Twenty Years of School Success through Together to Kindergarten!



In Summer 2025, LICM will celebrate the 20th anniversary of its **award-winning school success program for children and families, *Together to Kindergarten (TTK)***, which provides children with the academic and social skills to prepare them for kindergarten and beyond. The program also supports parents who were educated outside of the U.S. by providing workshops to acclimate them to the culture of the American public education system.

***Together to Kindergarten* is completely free of charge**, and in some cases, includes door-to-door transportation. The program creates long-term relationships with families by providing **free yearly Museum access passes to the families** and reunion nights.

Bridget Orellana, a current Hofstra University student, attended the *TTK School Success Program* as a preschooler. Fifteen years later, she returned to LICM to help teach the program. She credits LICM and *TTK* with giving her a solid foundation on which to start her schooling and for providing her family with resources to support her:

"This program was such an amazing experience and opportunity not only for the students but parents as well. I thank LICM for having such an amazing program and helping many families who need it the most. My childhood memories of LICM will forever stick with me wherever I go."

Throughout its 20-year history, **this vital program has empowered 890 children from 850 families.** *Together to Kindergarten* is now taught in four languages: English, Spanish, Mandarin and Haitian Kreyol.

SUPPORT TTK TODAY

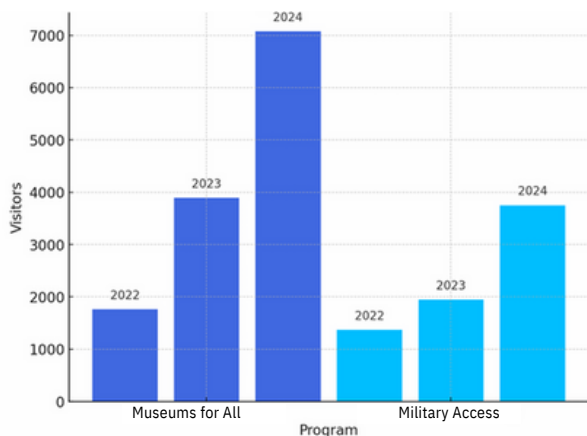


PARTNERS IN PLAY

Your Museum. Your Impact.

OUR FUNDING GAP IS REAL!

The Hidden Costs of Museum Access



LICM is committed to removing financial barriers to experiencing the Museum via several different discounted admissions programs. Use of two national admissions programs has nearly doubled in the past year and will double again in 2025. **These discounts will become unsustainable without additional funding.**

In 2024, 46,000 visitors used LICM's discounted ticket programs, creating a funding gap of (\$529,734). LICM relies on support from generous donors to close this funding gap.

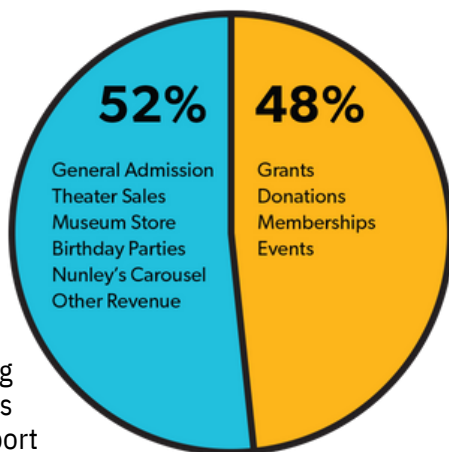
WHY SUPPORT THE POWER OF PLAY?

ANNUAL FUND

We rely on grants, corporate sponsorships, memberships and donations to fund nearly half of everything we do. **With your support**, LICM can remain committed to creating learning opportunities for **all children**, support

the well-being of children and families, and ensure that those with the greatest need have access to the Museum.

Find out how you can create impact [HERE](#).



IT'S GALA TIME: JOIN US!

Cupcakes & Cocktails - October 9, 2025



Cupcakes & Cocktails is LICM's annual fundraiser designed to celebrate the child in all of us. This year we are honoring **Selby Drummond** and **Steven Dubb** for their inspiring commitment to LICM's mission.

For sponsorship and underwriting opportunities visit contact Nyrekia White, Director of Development, at nwhite@licm.org.



Pictured: 2025 honorees, Steven Dubb and Selby Drummond.

AWARDS & ACCREDITATIONS



LICM has received **local and national recognition** for its exhibitions, programs and community initiatives.

To learn more, get involved, or to donate, visit www.licm.org/about/ or email us at Development@licm.org.