

explòne LI

Lots of
FUN, if you

HEAD TO MARS OR CREATE
SOME ART AT NEW MUSEUM
EXHIBITS FOR KIDS
THIS WINTER **B4**

PLANET



Explore LI

Callen Ade, 4, right, of Seaford, plays with "moon rocks" at the new "Moon to Mars" exhibit at the Long Island Children's Museum.



Take off for ADVENTURE

Explore space or go back in time at these exhibits

LINDA ROSIER

BY CATHI TUROW
Special to Newsday

Kids can have realistic experiences in outer space as they climb inside a rover based on a NASA spacecraft at the Long Island Children's Museum in Uniondale. They'll pretend they're touching down on lunar surfaces and building landscapes on Mars. The hands-on fun continues as kids make their versions of rockets and Martian friends.

For a different lifelike experience, friends and families can travel back to the Roaring '20s this winter at the Nassau

County Museum of Art. "In the '20s, it was all about travel, escapism, imagination, exoticism and going places

MORE INFO
LONG ISLAND CHILDREN'S MUSEUM
11 Davis Ave., Uniondale
NASSAU COUNTY MUSEUM OF ART
1 Museum Dr., Roslyn

that put you out of the ordinary," says Franklin Hill Perrell, chief curator at the art museum. "It brought the extraordinary into the everyday life." Visitors will notice everything from teapots to unusual

art to mannequins of ladies wearing comfortable, waistsless dresses instead of frilly frocks and corsets. Afterward, families create art projects based on what they've seen. Here's where your adventure awaits.

FLY TO THE MOON AT THE LONG ISLAND CHILDREN'S MUSEUM

In the new "Moon to Mars" exhibit, kids can visit six sections where they can imagine life in space. They'll begin by dressing up in astronaut cos-

tumes, hopping inside a simple version of NASA's Orion spacecraft and steering to a mysterious planet. Outside the rover, they can gather piles of 2-foot-wide foam blocks and build their own Martian or lunar landscapes. "There's no right or wrong answer," says Ashley Niver, director of education. "But there are photos in the exhibit to give kids a frame of reference. That way, they can learn more about the goal of their mission and the surface of Mars."

Kids can create paper rock-

ets and experiment with them at a console featuring three pipes attached to air pumps. Children slide their rockets onto the pipes, use the pump to build up air pressure and launch the rockets at hanging models of planets to see where they will land.

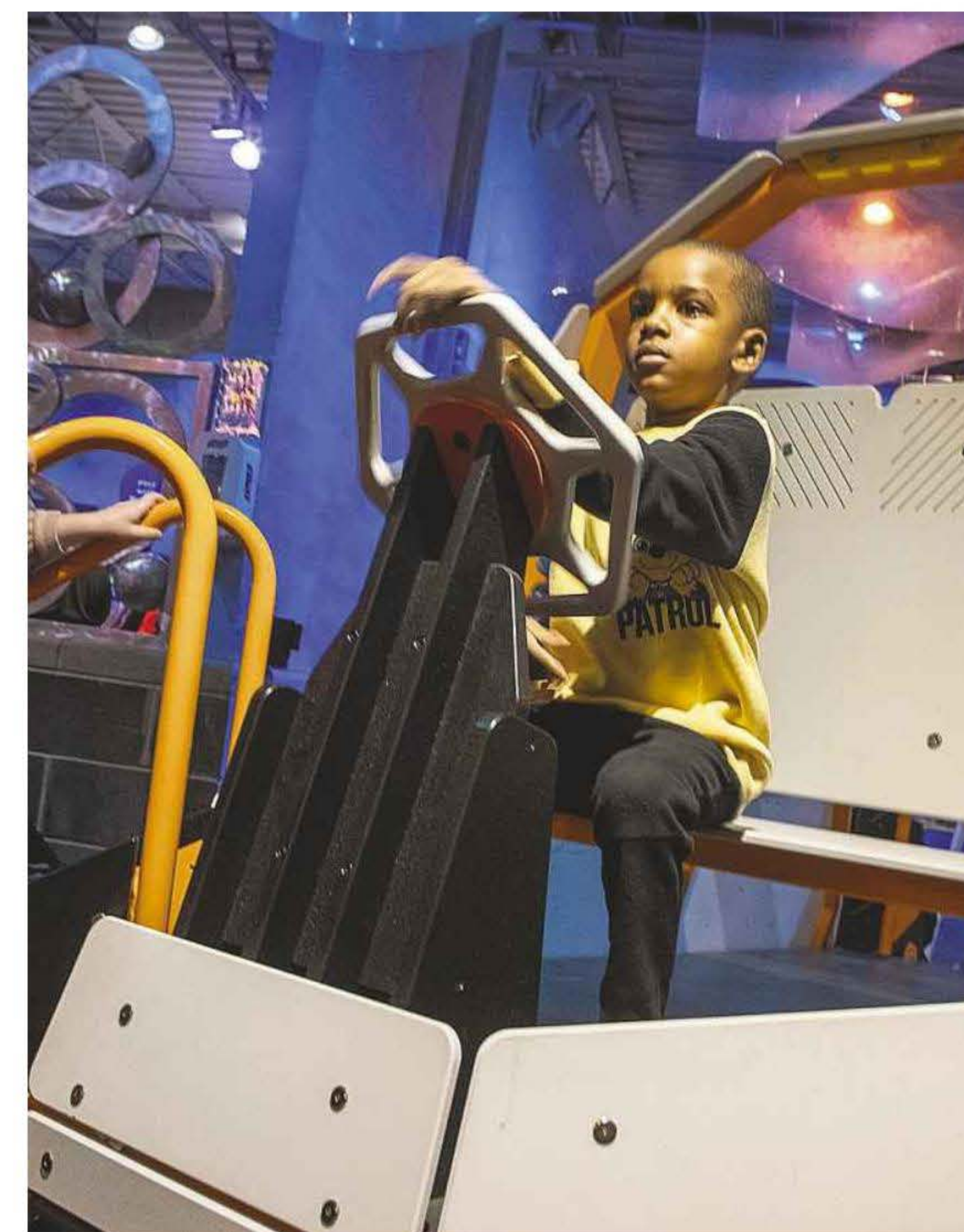
In the Lunar Leaps section, visitors can have a "moon walking experience" with reduced gravitational pull. The area includes several soft gray domes where kids will bounce from one spot to the next. They can also head over to an interactive screen kiosk where they'll check out the latest spacesuits or find out what astronauts are currently up to.

On specific weekends, staff members will lead additional hands-on pop-up projects to complement the exhibit. Visitors can make their own Orion rovers, make interstellar Pluto portraits or an alien friend to take home.

COST \$18 ages 1 and older; art pop-ups are included with price of admission; exhibit runs through May 4
MORE INFO 516-224-5800, licm.org

TRAVEL BACK IN TIME AT NASSAU COUNTY MUSEUM OF ART

The new "Deco At 100" exhibit highlights the Roaring '20s. Women were able to vote, drive cars and work in offices. Architects designed skyscrapers, radiators replaced fireplaces and for the first time, people traveled all over the world by plane.



Jaxon Mack, 4, of Queens, "drives" a Lunar Rover at the new "Moon to Mars" exhibit, which runs through May 4.

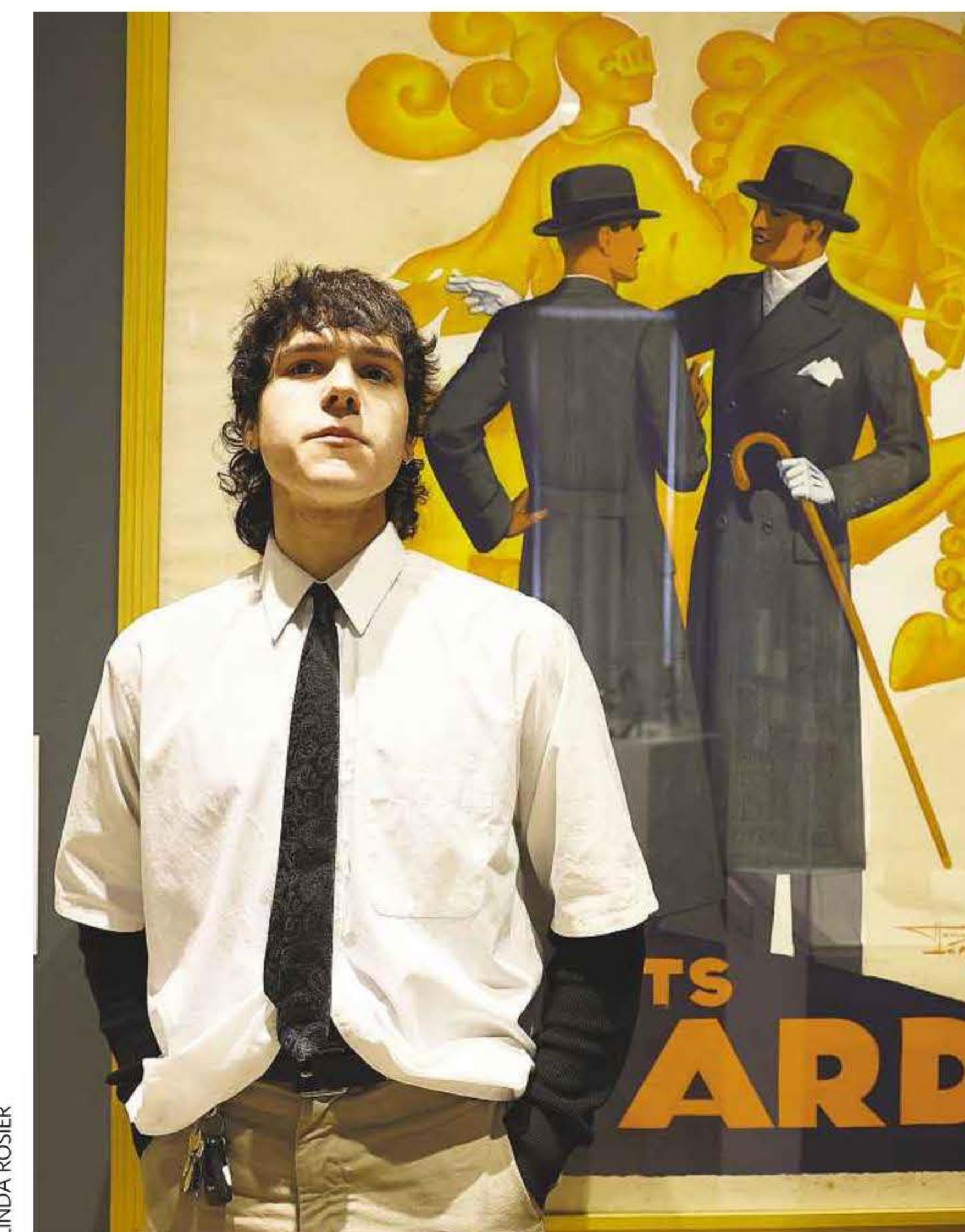
LINDA ROSIER

They could more easily reach places across the globe such as Africa and Asia, absorb the cultures, and combine them with classic American styles.

The galleries are filled with countless examples of how art, building designs, fashion and even the dishes families used on kitchen tables have multi-cultural/modern patterns.

Visitors can have fun with a scavenger hunt clue sheet as they pass by a painting of a mythological character wearing a crown made of ears of corn or cityscapes based on the way pyramids were constructed.

Head to the museum's art studio for hands-on fun. Families are welcome to attend a different workshop



Nassau County Museum of Art museum manager Garrett Berner with a poster that's part of the "Deco At 100" exhibit.

DEBBIE EGAN-CHIN

each Saturday and create projects based on displays in the exhibit. Make an Art Deco pinecone bird or a cityscape inside a candy box. The workshops are free with the price of museum admission. Alternatively, families can participate in Saturday family art workshops without visiting the museum (\$10 per child, \$20 per adult).

COST \$15; \$5 ages 12 and younger; exhibit runs through June 15
MORE INFO 516-484-9338, nassaumuseum.org

ON THE COVER Johnny DiCioccio, 6, of Bay Shore, dresses the part at the Long Island Children Museum's "Moon to Mars" exhibit.



The Munsill family — from left, Charlotte, Audrey, Pippa and mom Victoria — learn about Art Deco style at the Nassau County Museum of Art.

DEBBIE EGAN-CHIN



Juha Choi, 5, of Jericho, works on her creation at the Nassau County Museum of Art's workshop at Manes Art Education Center in Roslyn.

DEBBIE EGAN-CHIN