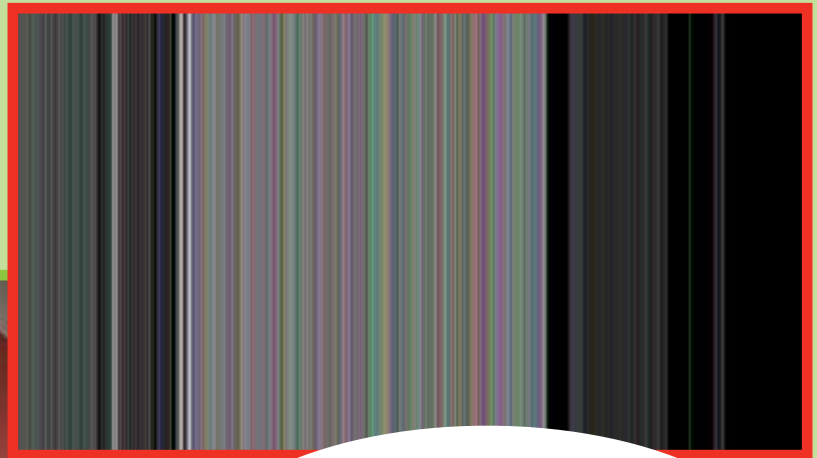
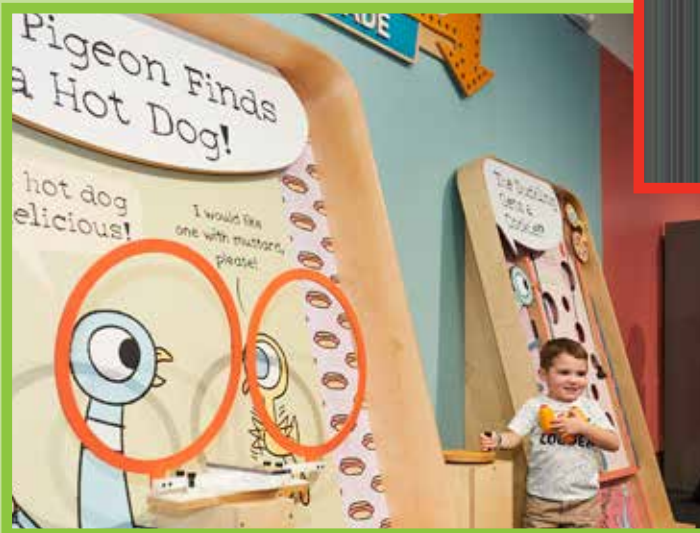


2022-23

# Education Catalog



"What an amazing educational experience!"



[www.licm.org/schools](http://www.licm.org/schools)



# Double your learning



"Fun field trip with a skilled and clear guide that teaches in a fun manner."

**TIP:** Create a day that covers all the educational bases by doubling up with our "STEM to STEAM" field trip, coupled with theater experiences pulled from the pages of popular literature. Combine our "Play & Wonder" field trip and its exciting Animal Encounter with a trip to the LICM Theater to watch Mo Willems' popular literary characters – Elephant, Piggie, Pigeon – come to life. These are just some of the popular combos available to your students with **"Double Your Learning!"**

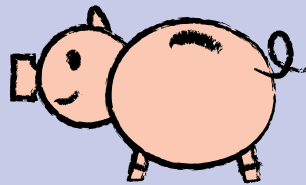


LICM is ready to assist you reach your curriculum goals by providing direct experiences that bring classroom learning to life. For many schools, field trips have been on hold for the last few years. With a normal school year planned for 2022-23, LICM is ready to welcome your students for a day of memorable learning.

## Maximize Students Learning Experiences ... Save Over 25%!

Our popular "Double Your Learning" option stretches field trip budgets while addressing the full spectrum of curriculum themes.

### Here's how it works:



Select **two** LICM programs during your visit day to maximize the value of your bus investment. Consider adding a live **theater** performance to your day **OR** add a second field trip **exploration** to create an unforgettable day for your students.

**BONUS:** When you book the "Double Your Learning" option, your schedule will include a 30-minute lunch break. **The cafeteria usage fee is waived** for groups booking this option.

Fee: **\$19/student**; includes guided morning and afternoon programs and cafeteria usage.

## Museum Store

Let us know if you want to visit the Museum Store for souvenirs



# Field Trips



**Check out our LICM field trip Pinterest boards!**

Watch as your students' become scientists, explorers, inventors and engineers as they move through LICM's two-stories of interactive exhibits. Concepts you've introduced in the classroom will come to life through hands-on experiences as they make observations and experiment with solutions. Field trip options and live theater performances align with a range of state and national learning criteria including the Common Core and Next Generation Science Standards. All guided field trips are led by trained Museum Educators.

**LICM is a popular field trip destination--book early for preferred dates and times! (Ask about Cafeteria or Museum Store visit availability when booking.)**

The Children's Museum offers reduced admission rates for all school visit participants. Built around specific themes, our guided field trips utilize selected exhibits highlighting key learning concepts. Exhibits cannot be substituted. **The cost per student is \$13.** (See chaperone policy on page 6)

**Guided field trips are available Tuesday through Friday; tour time choices are:**  
☐ 10 – 11:30 a.m. ☐ Noon-1:30 p.m.

## Play & Wonder —Nursery-Kindergarten

The educational value of play is immeasurable. Young children will naturally play in, and respond to, our developmentally appropriate galleries. Children, together with their chaperones, experience the benefits of tactile, socio-dramatic and scientific play.

**Exhibits:** TotSpot, Sandy Island, Sound Showers  
**Workshop:** "Animal Adventures" - children explore and learn about our natural world through close up animal encounters.



"So well organized - every minute spent here is filled with learning."

## Explore & More —Kindergarten-Grade 5

Children learn through hands-on experiences and use critical thinking skills to solve problems found in everyday life. Using newly acquired skills of inquiry, creativity and collaboration, students will explore multi-sensory experiences that extend classroom learning.



**Exhibits:** Bubbles, Broken? Fix it!, Pattern Studio and Comings & Goings

## STEMtoSTEAM —Grades 1-6

Working together children will examine how science, technology, engineering, math **AND** art combine to shape our natural world and the built environment. Through active learning, students are encouraged to make predictions and discover the answers to questions using hands-on experiences.

**Exhibits:** Tool Box, KEVA, Feasts for Beasts, Communication Station

## Self-Guided Tour

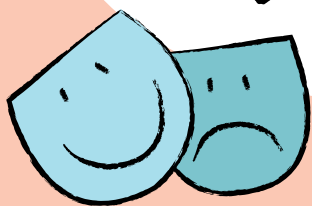
Self-guided tours are available Tuesday–Friday for groups with a minimum of 10 children. Reservations must be made at least two weeks prior to the tour date and are based on availability. The cost for a self-guided tour is **\$12** per person (all children and adults).

You will receive a confirmation of your reservation. Bring the confirmation with you and present at the Box Office on the day of your tour to receive the group rate. All participants in a self-guided tour must be present to qualify for the discounted rate. Cafeteria reservations are not available to self-guided tour groups.

**Blackout dates may apply. Membership, coupons, guest passes, special offers, etc. are not valid for groups, school visits or self-guided tours.**

# Theater Programs

"Fantastic Show!  
Best field trip ever,  
my students enjoyed  
every minute of the  
show!"



LICM Theater's School Performance season provides the perfect opportunity to introduce students to the excitement of the performing arts. Our 2022-23 season offers **three** exceptional productions that move popular stories from the page to the stage. Adaptations of the works of Charles Dickens and Mo Willems are on display this season. Themes address social and emotional skill-building and introduce students to timeless literary tales. Performances are developed and chosen with relevance to your student's educational needs.

All performances include supporting activities and/or talkbacks as part of the total theater experience. Education activities for each production are available for download from the LICM website to aid you and your students.

The cost per student is **\$13**. (See chaperone policy on page 8).

**Theater field trips arrival times are at 10:00 a.m. and noon.** Performances and theater activities run 90 minutes in length.

## A Christmas Carol

**-Experiential – Kindergarten – Grade 5**

Adapted by Chris Parks from Charles Dickens' book of A Christmas Carol

*Wednesdays, November 30 and December 7, 14 and 21 at 10:15 a.m. and noon*

*Thursdays, December 1, 8, 15 and 22 at 10:15 a.m. and noon*

*Fridays, December 2, 9 and 16 at 10:15 a.m. and noon*

Join us on the streets of 19th century London during the darkest days of the year. Meet the Cratchit family, Mr. Scrooge, and the ghosts of past, present and future. This classic story of acceptance and understanding is celebrated at LICM Theater using interactive theater techniques. Our cast weaves music, humor, puppetry and collaboration into this show. Students will help keep this story of change moving forward. Celebrate the change of seasons through this classic literary tale.





# Theater Programs

## Don't Let the Pigeon Drive the Bus!

### The Musical! – Pre-K-Grade 2

Book by Mo Willems and Mr. Warburton  
Music by Deborah Wicks La Puma

*Wednesdays, February 15, June 7 and 14 at 10:15 a.m. and noon.*

*Thursdays, February 16, March 9, 16, 23, 30 and June 8 and 15 at 10:15 a.m. and noon.*

*Friday, February 17, March 3, 10, 17, 24, 31 and June 9 and 16 at 10:15 a.m. and noon.*

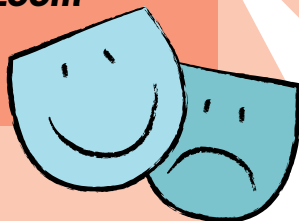
The arrival of a Mo Willems exhibit for a winter residency at LICM (see page 10) opens the door for complementary programming throughout the Museum. In addition to his status as the leading contemporary author of children's books, Willems has also built a reputation for his popular plays for youth audiences. His productions of "Knuffle Bunny" and "Elephant and Piggie's: We are in a Play!"

at LICM have resulted in SOLD OUT runs. Now we're getting ready to present his newest work "Don't Let the Pigeon Drive the Bus! The Musical!"

This musical comedy adventure features Willem's popular character The Pigeon, who is eager to try anything and everything. Audience members get ready: you'll be part of the action! "Don't Let the Pigeon Drive the Bus" is a perfect way to introduce students to theatre and the humorous stories from Willems' books.

*"Don't Let the Pigeon Drive the Bus! The Musical! is produced with permission of Music Theater International.*

**"The giggles and guffaws zoom along at top speed"**  
– Broadway World



## Elephant & Piggie's "We are in a Play!"

### – Pre-K – Grade 3

Based on the Elephant & Piggie books by Mo Willems  
Published by Hyperion Books for Children  
Script and Lyrics by Mo Willems  
Music by Deborah Wicks La Puma

*Wednesdays, April 19, 26 and May 3, 10, 17, 24 and 31 at 10:15 a.m. and noon.*

*Thursdays, April 20, 27 and May 4, 11, 18, 25 and June 1 at 10:15 a.m. and noon.*

*Fridays, April 21, 28, May 5, 12, 19 and June 2 at 10:15 a.m. and noon.*



### Returning by popular demand!

Enjoy a musical adventure, ripped from the pages of Mo Willems' beloved award-winning, best-selling children's books. Willems' classic characters Elephant and Piggie storm the stage in a rollicking musical romp filled with plenty of pachydermal peril and swiney suspense perfect for young audiences. Carefully cautious Gerald and spirited playful Piggie share a day where anything is possible in an imaginative exploration of the meaning of friendship. Together with nutty backup singers, The Squirrelles, our comedic duo even gets the audience involved in the action.

*Elephant and Piggie's: We Are in a Play! is produced with permission of Music Theater International.*

"As always,  
the show was great.  
The children  
thoroughly enjoyed  
themselves."

# Schedule your visit

LICM makes scheduling your visit simple: Review our **FAQs** at [www.licm.org/schoolsfaq](http://www.licm.org/schoolsfaq) and then complete the online reservation form. We'll take it from there!



(**Tip:** Completing the online form speeds up the reservation process.) Alternately, you can call the reservation office at (516) 224-5869, Monday through Friday between 9 a.m. and 5 p.m. Remember: Popular times fill up quickly. Please advise the Museum in advance if your group has any special

needs so that we may assign staff accordingly. Guided visits are offered Tuesday–Friday from 10–11:30 a.m. and from noon–1:30 p.m. Tour times cannot be adjusted.

## Cost

The Children's Museum offers reduced admission rates for all school visit participants. The cost per student is **\$13** for a guided tour. (See chaperone policy below.)

**Give Your Students extra Museum time! Ask the Reservation Manager about adding more time for self-guided exploration. Additional fees will apply.**

A 50% non-refundable deposit (or BOCES or School District purchase order) and "Signature Page" (sent to you when you register) is required 30 days before your visit to hold your reservation. LICM reserves the right to cancel a reservation if required materials are not received on time. Outstanding balances must be paid upon arrival on the day of your visit (unless purchase order has been received). If at least four weeks' notice of cancellation is given, reasonable efforts will be made to reschedule your class on another date. No refunds are issued for school trips.

**All of the Long Island Children's Museum's school visits may be paid with Nassau County BOCES Arts in Education and Suffolk County BOCES funds. LICM is also an approved vendor with the New York City Board of Education.**

## Guided Tour Group Size

The minimum number of students per class is 10 children; maximum is 25.

## New in 2022-23: No Longer Available! Carousel: Lunch Ride

Create the perfect ending to your LICM field trip with a ride on Lunley's Carousel. Students can enjoy the glass pavilion housing the 10-year-old art piece with a spin on the intricately designed horses before the class heads to the cafeteria. Fee: \$50 individual, plus \$3 per ride



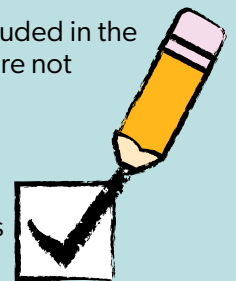
## Chaperone Policy

Guided field trip/theater programs:

- One adult chaperone is required for every three kindergarten and younger students
- One adult chaperone is required for every five children in grades 1–6. These chaperones are admitted free and must stay with their group at all times. (Adult chaperones include teachers, classroom aides, etc.) Additional adults that exceed the ratios mentioned above will be charged at the group rate (\$13 each or \$19 for Double Your Visit). A limit of five additional adults per date is permitted for each organization.
- School nurses and 1:1 aides are not included in the chaperone ratio identified above and are not charged for admission

## Galleries

In the event that a designated gallery cannot be made available, LICM reserves the right to provide a substitute exhibit.



## Lunch Time at LICM

While you're feeding their minds during an LICM field trip, schedule time to feed their tummies! If your group wishes to schedule lunchtime at LICM, a reservation request must be made in advance. (The LICM Cafeteria offers vending service only.) The cafeteria is available on a limited basis and by reservation only for groups bringing lunches. A usage fee of **\$55** (for up to 50 individuals) will apply. An additional fee of **\$35** is applied for groups between 50–100 individuals.

# Outreaches

## —Museum On The Go!

"Looking forward to having LICM at the library this summer!"

Can't get to the Long Island Children's Museum? Let the museum come to you!

Led by Museum Educators, all workshops embody the museum's philosophy that children learn best by seeing, touching, doing, and having fun.

Workshops last approximately one hour and are generally offered for groups of 25-30 children and their adult chaperones.

**Ask about discounts available for multiple bookings when you call.** LICM Outreach programs are registered with BOCES. Call (516) 224-5847 or e-mail outreach@licm.org to book an LICM Outreach. (Mileage fees apply for locations farther than 30 minutes away.)

### **Bubble POP! — Nursery - Grade 5**

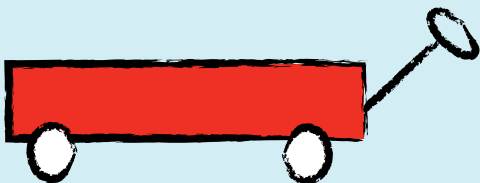
Become a bubble scientist and learn more about the unique physical properties of bubbles as you experiment at our three interactive stations. Experiment making bubbles and take home your own bubble print.

Fee: \$325

### **All Abuzz — Pre-K-Grade 3**

Junior entomologists will meet a hissing cockroach and discover insects that camouflage. They will learn what makes an animal an insect and the different body parts they have. Students will create their own bugs. Children will be provided with a field guide page about their bug that can be done after the program.

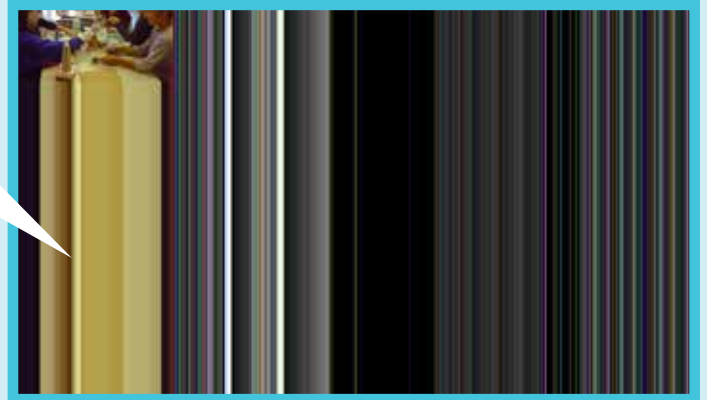
Fees: \$275



### **Build It — Pre-K - Grade 3**

How did the Leaning Tower of Pisa get its name? Explore the scientific forces behind structures such as bridges and towers as you apply building design concepts to construct a free-standing structure out of Magic Nuudles and toothpicks.

Fee: \$275



### **Catch Me if You Can!**

#### **— Kindergarten through Grade 5**

Investigate the ways animals protect themselves from predators. Meet our live animals that use defense mechanisms in order to stay safe. Create your own animal by using the animal defense of your choice.

Fee: \$275

### **Up in the Air — Kindergarten-Grade 5**

Explore the science of flight and dream BIG as you make your own gliders based on your observations of various AIR-MAZING experiments, and learn about milestones in the history of aviation.

Fee: \$275

### **Spirit of Invention**

#### **— Kindergarten-Grade 5**

Learn about the special functions of historical inventions such as the telephone, toaster and hair dryer. Hear about the lives of famous inventors such as Thomas Edison and Marie Curie before rolling up your sleeves and creating your own futuristic invention using an assortment of recycled materials.

Fees: \$275

# Outreaches

## —Museum On The Go!

### Changes & Challenges

#### — Kindergarten - Grade 6

Explore some of the tools and inventions used to assist individuals with disabilities. Learn how to type your name in Braille, communicate through American Sign Language and test your brain with mirror mazes.

Fee: \$325

### Fish Tales — Kindergarten - Grade 6

Learn about fish habits and their habitats, the maritime industry on Long Island and comparative anatomy by studying an actual fish dissection up close—including a taste sample after our instructor cooks it!

Fee: \$325

### Lucky Fortune — Grades 1-5

Discover Chinese Lunar New Year festivities, stories and traditions in this multicultural awareness program. Learn about the symbolism of the Lion Dance and create your own Lion Dance parade mask.

Fees: \$275

### KEVA® CoLab — Grades 2 - 5

Explore ideas related to building construction and structural function based on LICM's popular KEVA® exhibit. Become junior architects and engineers as you make your own KEVA® structures, experiment with gravity and speed and engage in collaborative play!

Fee: \$275

### Game On — Grades 2-6

Step into the role of a game developer as you design your own game from the initial concept to a finished prototype, including materials such as cardboard trays, marbles, LED lights and your own graphics in this fun STEAM program!

Fee: \$325

### Freedom Quilts — Grades 2-6

Discover the stories that quilts told in the days of the Underground Railroad to assist runaway slaves on their journey to freedom. Learn to "read" various quilt codes; then use mathematical patterns and fabric shapes to design a quilt that tells your very own personal story.

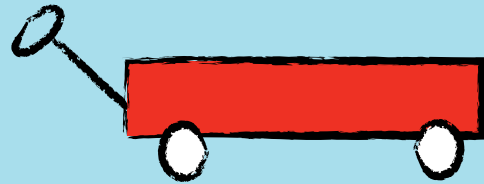
Fee: \$275

### A Balancing Act — Grades 2 - 6

Learn about the cool science of gravity, speed and motion as we experiment with pennies and balancing toys in a fun way! Then, make a high-flying "acrobat" that can balance on a piece of string.

Fee: \$325

Ask about quantity discounts.



## Virtual Outreach Options

The Museum offers Virtual Outreach options. Call or email for more information on this resource.

Ask about our new Summer Enrichment Program! Every year we introduce a quality summer Outreach that follows the National Reading Summer Theme.

Long Island Children's Museum is a registered vendor with BOCES and the New York City Department of Education.

"The children truly enjoyed your visit and learned a lot."



# New Exhibit Experiences



## The Pigeon Comes to Long Island: A Mo Willems Exhibit

January 21 – May 14, 2023

Visitors are invited into the imagination, whimsy, and humor of author and illustrator Mo Willems. Familiar characters, including best friend duo Elephant and Piggie, faithful companion Knuffle Bunny, and The Pigeon are featured. In this exhibit children can make art inspired by Mo Willems, step into activities pulled directly from the pages of his books, engage in dramatic play and learn about the rich social and emotional lives of the author's characters.

Co-organized by the Children's Museum of Pittsburgh and The Eric Carle Museum of Picture Book Art, Amherst, Massachusetts

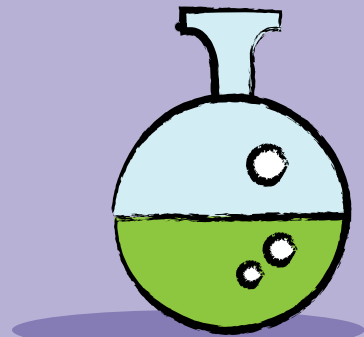


## STEM Nights

LICM can bring STEM experiences to family-focused school events! With the help of LICM educators, families will work together to complete exciting design challenges, tackle experiments or invent creative solutions to real world problems. Parents participate alongside their children and observe STEM curriculum in action, while observing their child's learning style, problem-solving abilities and collaborative approach.

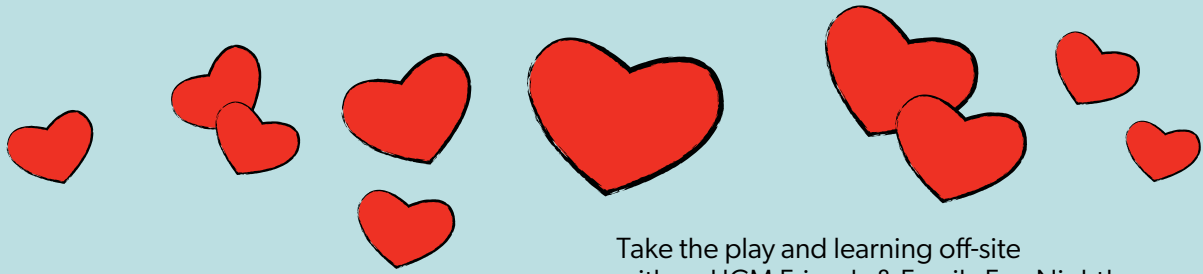
This program can be customized based on the number of families, grade level and desired number of activities. Contact Claire Demic, STEM Initiatives Program Director, at [cdemic@licm.org](mailto:cdemic@licm.org) for more information.

**Customized  
to Fit Your  
Needs!**



"Excellent hands on activities and engaging manipulatives to build and develop creativity."

# Celebrate Your Students



"Wonderful extensions and follow through from school lessons and activities."

Take the play and learning off-site with an LICM Friends & Family Fun Night!

- **Promote Family Interaction**
- **Provide Educational Enrichment**
- **Have Fun as You Make Memories!**

Exclusive evening hours to explore, dream, and play in the Children's Museum.

Start the year building new relationships;  
End the year sending a fond farewell!

Call (516) 224-5844 to learn more about our Friends & Family Fun Nights!



# Magical Memorable Events

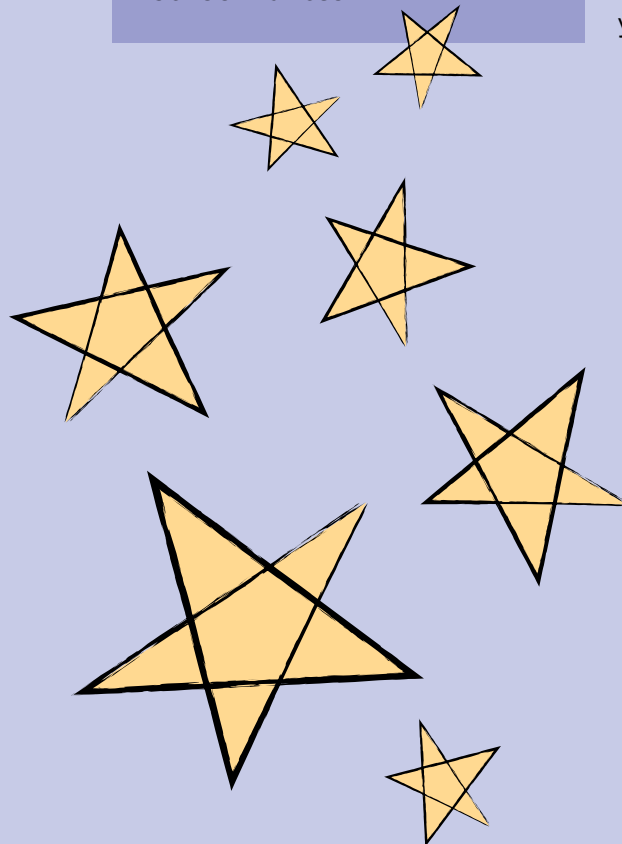


Nunley's Carousel is open and spinning memories again. Enjoy exclusive use of the Pavilion & Carousel for your next school event.

#### Perfect for:

- **Fundraisers**
- **Moving Up & Reunion Events**
- **School Dances**

Talk with our Event Rentals specialist to customize your event to ensure the event is remembered for years to come. Call (516) 224-5844 to get your event moving.





# LICM Contact List

Feel free to contact us to learn more about the variety of programs designed to meet the needs of your students, your faculty and your own professional development.

## **Field Trip, Theater School Visits and Group Reservations:**

(516) 224-5869 or [reservations@licm.org](mailto:reservations@licm.org)

**Membership** (Family Discounts for Educators):  
(516) 224-5821 or [membership@licm.org](mailto:membership@licm.org)

**Museum Rentals** (Friends & Family Fun Nights):  
(516) 224-5844 or [kjoseph@licm.org](mailto:kjoseph@licm.org)

## **Outreach Bookings:**

(516) 224-5847 or [outreach@licm.org](mailto:outreach@licm.org)

## **STEM Nights:**

(516) 224-5867 or [cdemic@licm.org](mailto:cdemic@licm.org)

Ask about LICM Professional Development options.  
Call (516) 224-5809.



## 2022-23 Educator Discount

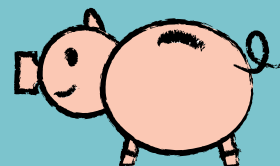
**You've enjoyed the Museum with your students; now bring your family!**

# SAVE \$25 off a Premium Membership



Premium Membership categories available to meet a variety of family sizes and needs.

Visit [licm.org](http://licm.org) for membership details. Present this coupon with proof of your NY State teaching license at LICM Membership Desk when purchasing your membership. Valid through June 30, 2023.





"The organization and structure of the day was so engaging and fluid, especially for a special needs population."

"Educators were knowledgeable, effective, engaging and connected immediately with the students, particularly with students with alternate learning needs."

"From the ease of registration to check in, to programs, we will definitely return next year!"

**nationalgrid**

**Looking for STEM classroom resources?**

National Grid has prepared materials for educators for all grade levels.  
Visit: <http://www.ngridenergyworld.com/>



**Council on  
the Arts**

*Operational support is provided from the New York State Council on the Arts with the support of the Office of the Governor and the New York State Legislature*