




Long Island Children's Museum



Education Catalog 2016 - 2017






Double Your Learning at LICM ... and Save 20%!


Long Island Children's Museum knows that educators and administrators need to stretch budgets to provide enrichment opportunities for their students. We want to ensure that all classes get the most out of their trip to LICM; that's why we created our **Double Your Learning** program.

Here's how it works:

Come for a field trip + Stay for a performance ÷ Bus cost =
Best Educational Value

Select two LICM programs on the day of your visit to maximize the value of your bus investment. Consider adding a live theater performance to your day or a second exhibit exploration to create an unforgettable day for your students.

 **TIP:** Create a day-long, immersive science focus with LICM's "STEM to STEAM" field trip, coupled with the "Bats, Bees and Butterflies" theater experience. Or plan a day at the Museum for your pre-readers by combining our "Play & Wonder" field trip with a performance of "Goodnight Moon." These are just some of the popular combos available to your students when you Double Your Learning!

 **BONUS:** When you book a Double Your Learning option, your schedule will include a 30-minute lunch break. The cafeteria usage fee will be waived for groups booking this option.

Fee: \$16/student; includes guided morning and afternoon programs; cafeteria usage, pre- and post-visit activity manuals.

Field Trips



Exciting exhibits, hands-on learning experiences and professionally trained staff make Long Island Children's Museum a "must-visit" education destination ... year after year. New field trip options and popular favorites are tailored to the New York State Learning Standards, your curriculum and the age group of your class.

Book early for preferred dates and times!

Trained Museum Educators lead all guided school visits. The Children's Museum offers reduced admission rates for all school visit participants. The cost per student is **\$10**.
(See chaperone policy on page 13.)

Play & Wonder – Nursery-Kindergarten

The educational value of play is immeasurable. Young children will naturally play in, and respond to, our developmentally appropriate galleries. Children, together with their chaperones, are invited to experience the benefits of tactile, socio-dramatic and scientific play.

Exhibits: TotSpot, Sandy Island, Sound Showers

Workshop: "Animal Adventures"—children explore and learn about our natural world through close up animal encounters.

Explore & More – Kindergarten-Grade 5

Children will be immersed in learning through hands-on experiences and use critical thinking skills to solve problems found in everyday life. Using newly acquired skills of inquiry, creativity and collaboration, students will explore multi-sensory experiences that extend classroom learning.

Exhibits: Bubbles, Broken? Fit it!, Pattern Studio, Comings & Goings
(See exhibit schedule, page 10.)

STEM to STEAM – Grades 1-6

Working together children will examine how science, technology, engineering, math AND art combine to shape our natural world and built environment. Through active learning, students are encouraged to make predictions and discover the answers to questions using hands-on experiences.

Exhibits: Tool Box, KEVA®, Feasts for Beasts, Communication Station

Field Trips

Mapping Your World-Grades 2-4

Children dig deep to take a closer look at the science of cartography (map-making). Students will explore geography in two hands-on exhibits and learn the tricks of the mapping trade, including cardinal direction points and graphing. Using this information, students will create a treasure map in an interactive workshop.

Exhibits: Communication Station, KEVA®

Workshop: "Treasure Maps!"—students will discover the meaning and function of the basic communication tools every map uses, then work together to create a treasure map to help the teacher find the hidden treasure in a learning studio.

Self-Guided Tour

Self-guided tours are available Tuesday–Sunday for groups with a minimum of 10 children. Reservations must be made at least two weeks prior to the tour date and are based on availability. The cost for a self-guided tour is **\$9** per person (children and adults).

A confirmation will be sent following receipt of reservations. This confirmation must be presented at the box office on the day of the tour to receive the group rate. All participants in a self-guided tour must be present to qualify for the discounted rate. Cafeteria reservations are not available to self-guided tour groups. Blackout dates may apply. Membership, coupons, guest passes, special offers, etc. are not valid for groups, school visits or self-guided tours.

Special Needs Tours are available upon request. If accommodations are needed, please let us know in advance.



Theater Programs

LICM Theater's School Performance season offers five exceptional productions that allow you to incorporate the performing arts into your curriculum. Themes and topics include bioscience, sociology, humanities and literature. Performances are developed and chosen with relevance to your student's educational needs.

All performances are professional and include supporting workshops and/or talk-backs as part of the total theater experience. Education packets with supporting materials are available for download from the LICM website to aid you and your students.

The cost per student is **\$10**. (See chaperone policy on page 13.)



BONUS: Special in-school, pre-visit programs are available for designated shows (★) An LICM Theater Educator will visit your classroom and prepare your students for their trip to LICM. Fee: \$50 per class.

All performances are at 10 a.m. and noon.

Goodnight Moon (★)—Pre-K – Grade 2

Adaptation and music by Chad Henry

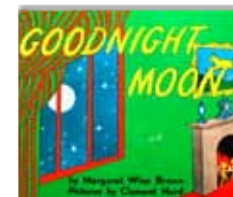
Wednesday, November 2 through Friday, November 4, 2016
Wednesday, November 9 and Thursday, November 10, 2016
Tuesday, November 15 through Thursday, November 17, 2016

The book "Goodnight Moon," is a children's classic, delighting generations over 60 years. The crowning literary achievement of author Margaret Wise Brown, with adored illustrations by Clement Hurd, is brought vibrantly to life with fanciful song, dance and puppetry.

The stage production brings to life this long poem of goodnight wishes set in Bunny's great green room as he is going to bed. Upbeat and charming songs, accompanied by a live pianist, and innovative puppetry give life to the various objects in the bunny's room. Watch as the red balloon floats around the room and the cow jumps over the moon. Children and teachers will delight in seeing this beloved book come to life.

Students will learn about telling time, using a phone, and nursery rhymes.

Goodnight Moon is a joint production of LICM and Plaza Theatrical.



Theater Programs

Red Riding Hood (★)-Grades K-6

Book by Mike Kenny, Music and Lyrics by Julian Butler

Tuesday, December 20 and Wednesday, December 21, 2016
Tuesday, January 10 through Friday, January 13, 2017

Two siblings on a sleepover at their grandmother's house have trouble falling asleep. To pass the time, they decide to act out their favorite story with items found in their room. Soon what's real and what's imagined begins to blur, and the children find themselves in the deep dark woods with a wolf tracking them down. Experience this innovative musical that offers an interactive take on a classic tale.

Presented with permission of Plays for Young Audiences - a partnership of Seattle Children's Theatre and Children's Theatre Company of Minneapolis.



TIP: Don't see a date that works for your school? Other performance dates may be available for this production. Ask the reservation coordinator about availability when booking your school visit.

Princess Frog - A Musical Fairy Tale (★)-Grades 1-4

Book, Music and Lyrics by Lena Pennino-Smith
Adapted from a story by Italo Calvino

Wednesday, February 15 and Thursday, February 16, 2017
Thursday, March 7 through Friday, March 10, 2017



The "Princess Frog - a Musical Fairy Tale" is a musical adaptation of the Italian fairy tale "The Prince Who Married a Frog," written by Italo Calvino. The Queen needs her three sons to find their partners but the way they must do so is both hilarious and engaging. Students will be invited to participate, as well as help shape the story. Family is a complex cultural quilt and students attending will observe the relationships of siblings and parents.

With 300 versions of this tale throughout Europe, this new twist by Long Island native Lena Pennino-Smith focuses on the values of family and reminds us all to trust our instincts.

Theater Programs

Bats, Bees and Butterflies-Grades 1-6

Presented by Wildlife Expert Rob Mies

Tuesday, February 28 through Friday, March 3, 2017

Birds, insects and mammals are responsible for pollinating many of the important food we eat every day. Unfortunately, these pollinators are disappearing across North America, which will impact the health of humans. Learn about the fascinating world of these important creatures and what you can do in your backyard and neighborhood to help them.

Students will learn by studying three interconnected species... Monarch butterflies, native bees and insect-eating bats. Each of these animals is disappearing at an alarming rate. Students will have the opportunity to actively participate in discussions using the scientific method and discover what conservation projects are currently underway.

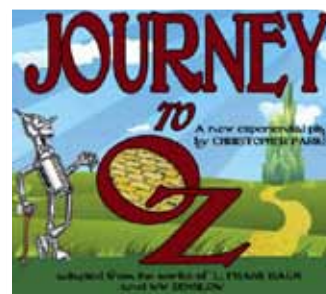


Journey to Oz (★)-Grades 1-4

Written and Directed by Christopher Parks of Experiential Theater Company
Based on the work of author L. Frank Baum and Illustrator W.W. Denslow

Wednesday, May 17 through Friday May 19, 2017
Tuesday, May 23 through Friday, May 26, 2017
Tuesday, May 30 through Friday, June 2, 2017
Tuesday, June 6 through Friday, June 9, 2017

Inspired by L. Frank Baum's original stories, this clever adaptation puts the audience front and center -- really! In this fantastic new adaptation, you are invited to go to Oz with Dorothy. Audience members become part of the cast in this interactive production, singing, dancing and acting alongside professional actors. Students learn the



art of storytelling while creating, analyzing and participating in this performance. When the cyclone comes, the entire theater enters the eye of the storm with whisking lights and exciting music created by lauded composer, Josh Totoro. During the journey, student will be asked to become Dorothy, meet and help the scarecrow and tin woodsman, become citizens of the Emerald City and help the Witch of the West with her makeup. Come see Journey To Oz and find out why there's no place like home.

Outreaches: Museum on the Go!



Can't get to the Long Island Children's Museum? Let the museum come to you!

Led by Museum Educators, all workshops embody the museum's philosophy that children learn best by seeing, touching, doing and having fun.

Workshops last approximately one hour and are generally offered for groups of 25–30 children and their adult chaperones. (Note: the Changes & Challenges outreach can accommodate up to 60 children.)

Ask about discounts available for multiple bookings when you call. A nominal mileage fee may be added for greater distances. All LICM Outreach programs are registered with BOCES. Call (516) 224-5847 or e-mail outreach@licm.org to book an LICM Outreach.



Bubble POP!—Nursery-Grade 5

Discover bubble wands, bubble prints, bubble shapes, and more! Become a bubble scientist and learn more about the unique physical properties of bubbles. Find out why a bubble is round and explore bubble colors as you play at our three interactive stations. *Fee: \$275*

All Abuzz—PreK-Grade 3



Butterflies, ladybugs, and ants, oh my! Become a junior entomologist as you explore insect anatomy and habitats in a very “hands-on” way. Meet Sammy the Walking Stick, touch a beetle wing, discover insects that camouflage and create your own imaginary bug! *Fee: \$225*

Changes & Challenges—Kindergarten-Grade 6

What kind of tools do we use to overcome specific changes and challenges in our lives? Explore some of the tools and inventions used by people with differing abilities, such as a wheelchair and a Perkins Braille typewriter. Learn how people communicate through sign language and use your sense of touch to solve our tactile puzzles. *Fee: \$275*

Fish Tales—Kindergarten-Grade 6

Join us for an imaginary fishing trip on Long Island's waterways and discover the fascinating world of fish! Learn about fish habits and their habitats, the maritime industry on Long Island, and comparative anatomy. Grab a magnifying glass as you study an actual fish up close, dissect it, cook it and then eat it! *Fee: \$225*

(NEW!) Game On!—Kindergarten-Grade 6

Arcade games like Pong and Pac-Man heralded a new age of innovation in the history of gaming. Explore the world of arcade machines and video games in this fun STEAM program encouraging children's connected learning and creative thinking. Step into the role of a game developer as you design your own game from the initial concept to a finished prototype, including materials such as: cardboard trays, marbles, LED lights, and your own graphics! Then earn tickets to test out your friend's in our community “arcade”! *Fee: \$275*



Spirit of Invention—Kindergarten-Grade 3



Put on your thinking caps as you explore our collection of early inventions. Learn about the special functions of historical inventions such as the telephone and the meat grinder, and hear about the lives of famous inventors such as George Washington Carver and Marie Curie. Use your knowledge of the technology, problem-solving skills and creativity that go into the inventive process to create your own futuristic invention using an assortment of recycled materials. *Fee: \$225*

Up in the Air—Kindergarten-Grade 6

Explore the science of flight and dream BIG as you engineer your own gliders based on your observations of various AIR-MAZING experiments! Discover milestones in the history of aviation and learn about the “Golden Age” that transformed aviation from a sport to a growing industry. *Fee: \$225*

Build It—Kindergarten-Grade 3

How do architects design buildings? What makes a structure stable? Discover the answers to these questions as you explore the scientific forces behind structures such as bridges and towers. Learn why the Leaning Tower of Pisa got its name and how gravity affects the building process. Apply building design concepts to construct a freestanding structure out of modeling clay and toothpicks. *Fee: \$225*

KĒVA® CoLab—Grades 2–5

Calling all architects and engineers! Explore ideas related to building construction and structural functions based on LICM's popular KĒVA® exhibit. KĒVA® planks are fun building blocks designed to be the same size, shape and weight. Make your own KĒVA® structures, experiment with gravity and speed and engage in collaborative play! *Fee: \$275*

Lucky Fortune—Grades 1–5



What is your zodiac sign? Explore the stories and traditions of China during this multicultural awareness program. Discover Chinese Lunar New Year festivities that include hosting special banquets, performing the lion dance and sharing lucky red envelopes. Create your own parade mask to celebrate all year long! *Fee: \$225*

A Balancing Act—Grades 2–6

What makes things go f-f-fast ... or very slooow? Learn about the cool science of gravity, speed and motion as we experiment with pennies and peacock feathers in a fun way! Then, make a high-flying “acrobat” that can balance on a piece of string. *Fee: \$275*

Freedom Quilts—Grades 2–6

Discover the stories that quilts told in the days of the Underground Railroad. Before the American Civil War, quilt patterns and symbols are believed to have communicated messages to help runaway slaves on their journey to freedom. Learn to “read” various quilt codes, including the Bow Tie, the Monkey Wrench and the North Star. Then use mathematical patterns and fabric shapes to design a quilt that tells your very own personal story. *Fee: \$225*



about our new Summer Enrichment Program! Every year, we introduce a quality summer Outreach that follows the National Reading Summer Theme.

New Exhibit Experiences



Your House, My House

Saturday, October 8, 2016 through Sunday, January 8, 2017

Your House, My House takes visitors on a fantastic journey into the homes of people around the world – *no passport or luggage required!* See how culture, climate, tradition and geography influence the way a house is built. Exhibit activities include designing, building and visiting homes ... large (walk-in) houses, small houses, floating houses and even houses that pack and up and go with a family (ger). Explore interior elements, such as furniture, cooking utensils, games and musical instruments to gain insights into how lifestyle and culture are reflected in homes.

KLUTZ® Amazingly Immature

Saturday, January 21, 2017 through Sunday, May 7, 2017

School classes will never forget this field trip as they are encouraged to embrace their inner zany genius while exploring what these behaviors can teach about science, engineering, math and literacy. With activities such as pulling a tablecloth out from under a place setting to learn about inertia, building a boomerang as an introduction to elements of aerodynamics, and folding paper rings to explore geometry,



New Exhibit Experiences

KLUTZ® Amazingly Immature encourages communication and learning through laughter, play, comedy and memories of different generations' childhood hijinks. In the exhibit students will be introduced to strong STEM-driven content, as they:

- Build a cardboard boomerang from down under.
- Create funny photo illusions by manipulating perspectives.
- Turn spoons into catapults or make them do somersaults.
- Mash up your own inventions.
- Transform money into wearable bling!
- Yank a tablecloth without dropping the dishes; are you up to the challenge?



Pattern Wizardry

Saturday, June 3, 2017 through Sunday, September 3, 2017

Pattern Wizardry is a wildly whimsical sensory experience presented entirely in rhyme that features four interactive areas, each focusing on a specific type of pattern: Spiral Spells, Tessellation Station, Branch, Branch and Linear Lab. The exhibition also features a Wizard Library, a computer pattern station where kids can create their own patterns and Symmetry Sorcery, where children investigate how we use symmetry to organize patterns.

In this bilingual (English/Spanish) exhibit, students are introduced to the fundamentals of patterns as the building blocks of our natural and man-made world. Patterns teach children how to:

- Use patterns to organize and enrich our lives;
- Be creative by using their imaginations;
- Build awareness and appreciation for mathematics, nature and world customs;
- Work cooperatively;
- Gain skills in research and critical thinking.

Professional Development Offerings

The Children's Museum has Professional Development Courses designed specifically for Early Childhood, Pre-school and Elementary School educators that can come directly to your school or center.

Get full details and inquire about open dates by calling (516) 224-5809.



Planning Your Visit




Advance Planning:

Teachers are encouraged to visit the Children's Museum prior to coming with their class. Educators with a valid school ID or other proof of teacher status are admitted free for these exploratory visits. Please call (516) 224-5801 to set an appointment at least one week in advance during regular Museum hours to receive this professional courtesy.

Cost:

The Children's Museum offers reduced admission rates for all school visit participants. The cost per student is **\$10** for a guided tour. *(See chaperone policy on next page).* Would you like your students to spend extra time at the Museum? Ask the Reservation Manager about adding time for self-guided exploration. Additional fees will apply.

A 50% non-refundable deposit and signed "School Visit Contract" (sent to you when you register) must be received at the Museum 30 days before your visit to hold your reservation. LICM reserves the right to cancel a reservation if required materials are not received on time. Outstanding balances must be paid upon arrival on the day of your visit. If at least four weeks notice of cancellation is given, reasonable efforts will be made to reschedule your class on another date. No refunds are issued for school trips.

 **TIP:** All of the Long Island Children's Museum's school visits may be paid with Nassau County BOCES Arts in Education and Suffolk County BOCES funds. LICM is also an approved vendor with the New York City Board of Education.

Guided Tour Group Size:

Minimum number of students per class is 10 children; maximum is 25.

Chaperones:

- **One** adult chaperone is recommended for every **three** Nursery school, Pre-K and Kindergarten students.
- **One** adult chaperone is recommended for every **five** children in grades 1–6. These chaperones are admitted free and must stay with their group at all times. (Adult chaperones include teachers, classroom aides, etc.) Additional adults that exceed the ratios mentioned above will be charged at the group rate (\$10 each). A limit of five additional adults per date is permitted for each organization.

Galleries:

In the event that a designated gallery cannot be made available, LICM reserves the right to provide a substitute exhibit.

Schedule Your Visit:

LICM makes scheduling your visit simple: complete the online reservation form at **www.licm.org/schools** and submit. We'll take it from there!

Alternately, you can call the reservation office at (516) 224-5869, Tuesday through Friday between 9 a.m. and 5 p.m. LICM requires a minimum of two weeks' notice for any reservation. Please advise the Museum in advance if your group has any special needs so that we may assign staff accordingly.

Guided visits are offered from Tuesday–Friday from 10–11:30 a.m. and from noon–1:30 p.m. *Tour times cannot be adjusted.*

Cafeteria:

Advance reservations are required to use the cafeteria (vending service only). The cafeteria is available on a limited basis and by reservation only for groups bringing lunches. LICM can accommodate a maximum of 50 students in the cafeteria. Please note: a cafeteria usage fee will apply.

Museum Store:

Don't forget to take home a memento from your trip! The Museum Store is packed with educational items that will help you bring home some of the fun.

No time to let the kids explore on their own? Ask about our school bags of fun! The Museum offers prepackaged, low-cost souvenir goodie bags featuring four souvenir items. Ordering is easy and simple: prepay for each student and pick-up when your tour is done. Call (516) 224-5814 at least one week prior to your scheduled visit for full details.

Membership (Educator Discounts):

Bring coupon on page 15 and proof of your NY State teaching license and you will receive a \$10 discount on your purchase of an LICM family membership.



A Different Kind of School Fundraiser!



Tired of the same old raffles and sales drives?
Try an LICM Family Fun Night!

- Promotes Family Interaction
- Provides Educational Enrichment
- Delivers Fundraising Success

Exclusive hours to explore, dream and play in the Children's Museum. Available weekdays and weekends; perfect as a kickoff to your yearly events or as a finale to your fundraising efforts.

Call (516) 224-5840 to learn more about Family Fun Night packages.

LICM Contact List

Feel free to contact us to learn more about the variety of programs designed to meet the needs of your students, your faculty and your own professional development.

Field Trip and Group Reservations:
(516) 224-5869 or reservations@licm.org

Outreach Bookings:
(516) 224-5847 or outreach@licm.org

Membership (Family Discounts for Educators):
(516) 224-5823 or membership@licm.org

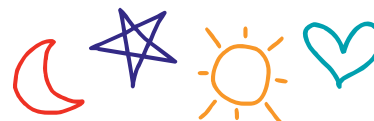
Professional Development Reservations:
(516) 224-5852 or jwalsh@licm.org

Museum Rentals (Friends & Family Fun Nights):
(516) 224-5840 or fguarino@licm.org

Scout Programs:
Scout Workshops and Scoutreaches—
(516) 224-5848 or reservations@licm.org
Scout Overnights—(516) 224-5840 or
fguarino@licm.org

Museum Store:
(516) 224-5814 or store@licm.org

Theater Field Trips:
Pre- and Post-Visit materials—
(516) 224-5876 or theater@licm.org



2016-2017 Educator Discount

You've enjoyed the Museum with your students; now bring your family!

SAVE \$10 off any LICM Family Membership

Membership categories available to meet variety of family sizes and needs.

Visit licm.org for membership details. Present this coupon with proof of your NY State teaching license at LICM Membership Desk when purchasing your membership. **Valid through June 30, 2017.**





Looking for STEM classroom resources? National Grid has prepared materials for educators for all grade levels.

Visit: <http://www.ngridenergyworld.com/>



LICM receives support from the Institute of Museum and Library Services and the New York State Council on the Arts with the support of Governor Andrew Cuomo and the New York State Legislature.